

The logo features a stylized, flowing river shape in white and green, set against a blue background.

# St. Joseph River Basin Commission





# St. Joseph River Basin Commission



## SOUTH BEND FISH LADDER BUILT 1987

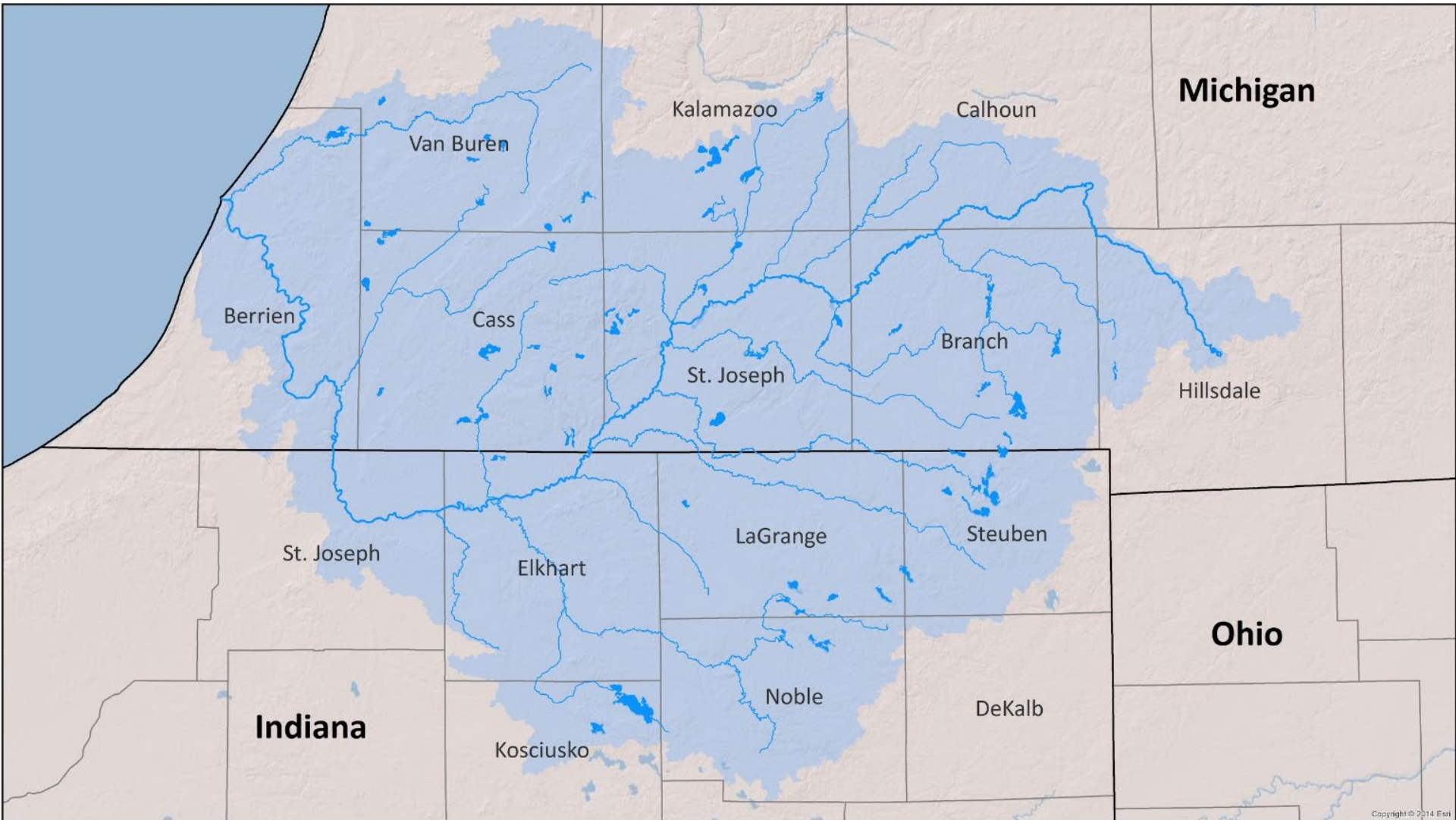
This fish ladder is the fourth in a series of fish ladders built on the St. Joseph River to allow trout and salmon to migrate 55 miles from Lake Michigan to this point. It is part of a cooperative fish management project between the States of Michigan and Indiana to provide passage for these fish up the St. Joseph River. Funds to build this ladder were provided by the State of Indiana and by the Anadromous<sup>®</sup> Fish Grant Program administered by the U.S. Fish and Wildlife Service.

STATE OF INDIANA DEPARTMENT OF NATURAL RESOURCES  
DIVISION OF FISH AND WILDLIFE

@Genki Kitty



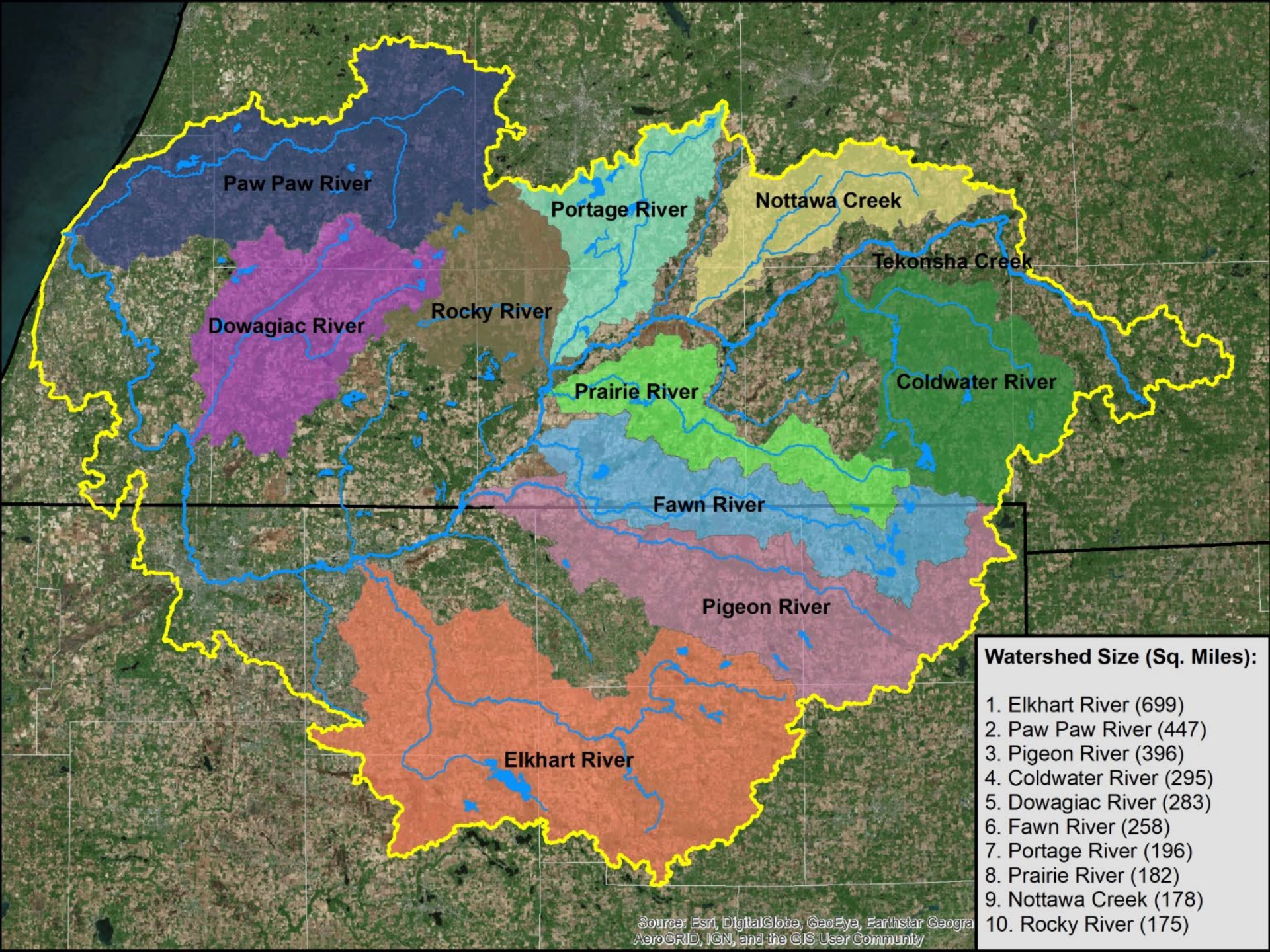
# Our Basin





**Watershed Size (Sq. Miles):**

|    |            |         |
|----|------------|---------|
| 1. | Fox        | (6,577) |
| 2. | Grand      | (5,577) |
| 3. | St. Joseph | (4,682) |
| 4. | Menominee  | (4,073) |
| 5. | Muskegon   | (2,727) |
| 6. | Kalamazoo  | (2,032) |
| 7. | Manistee   | (1,950) |



**Watershed Size (Sq. Miles):**

1. Elkhart River (699)
2. Paw Paw River (447)
3. Pigeon River (396)
4. Coldwater River (295)
5. Dowagiac River (283)
6. Fawn River (258)
7. Portage River (196)
8. Prairie River (182)
9. Nottawa Creek (178)
10. Rocky River (175)

Source: Esri, DigitalGlobe, GeoEye, Earthstar Geogra AeroGRID, IGN, and the GIS User Community

# Who is on the SJRBC?

## MUNICIPAL EXECUTIVE

### APPOINTEE



**Dick Hickman**  
Mayor  
City of Angola

rhickman  
@angolain.org  
(260) 665-3556

### PROXY



**Kris Thomas**  
MS4 Coordinator  
City of Angola

kthomas  
@angolain.org  
(260) 624-2663

## COUNTY EXECUTIVE

### APPOINTEE

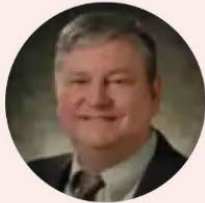


**Lynne Leichy**  
Commissioner

lleichy  
@co.steuben.in.us  
(260) 668-1000 x1224

## HEALTH

### APPOINTEE



**Ted Crisman, M.D.**  
Health Officer

healthdept  
@co.steuben.in.us  
(260) 668-1000 x1500

### PROXY



**Alicia Walsh**  
Administrator  
Health Department

avane  
@co.steuben.in.us  
(260) 668-1000 x1515

## DRAINAGE

### APPOINTEE



**Mike Ruff**  
County Surveyor

mruff  
@co.steuben.in.us  
(260) 668-1000 x1800

## CONSERVATION

### APPOINTEE



**Janel Meyer**  
Soil & Water  
Conservation District

Janel.Meyer  
@in.nacdnet.net  
(260) 665-3211

## STEBEN COUNTY



## INDIANA DEPARTMENT OF NATURAL RESOURCES

### APPOINTEE



**Daniel Bortner**  
Director

dbortner  
@dnr.in.gov  
(317) 232-4020

### PROXY



**Rod Edgell**  
LARE Biologist

redgell  
@dnr.in.gov  
(260) 244-6805 x230

# How are we funded?

FY22 Budget    FYE 21 Forecast    FY21 Budget

## REVENUE

|                      | FY22 Budget    | FYE 21 Forecast | FY21 Budget    |
|----------------------|----------------|-----------------|----------------|
| State of Indiana     | 101,800        | 89,227          | 89,227         |
| Local Government     | 63,660         | 61,859          | 63,660         |
| Special Projects     | 2,500          | 23,688          | 23,500         |
| Interest             | 500            | 475             | 2,500          |
| Other Income         |                |                 |                |
| <b>Total Revenue</b> | <b>168,460</b> | <b>175,249</b>  | <b>178,887</b> |

## EXPENSES

| Basic Operations              |                |                 |                |
|-------------------------------|----------------|-----------------|----------------|
| SJRBC Director                | 47,000         | 47,000          | 47,000         |
| Accounting Services           | 4,000          | 3,200           | 4,000          |
| Office Rent                   | 7,000          | 5,775           | 6,250          |
| Legal                         | 2,000          | 2,000           | 2,000          |
| Bank Service Fees             | 200            | 50              | 750            |
| Insurance                     | 520            | 520             | 520            |
| Travel/Mileage                | 1,200          | 575             | 1,250          |
| Audit                         |                | 0               |                |
| Information Technology        | 1,000          | 1,000           | 1,000          |
| Printing                      | 200            | 75              | 350            |
| Postage                       | 50             | 15              | 50             |
| Telephone                     | 240            | 240             | 240            |
| Misc Expenses                 | 250            | 0               | 250            |
| <b>Operating Expenses</b>     | <b>63,660</b>  | <b>60,450</b>   | <b>63,660</b>  |
| Special Projects              |                |                 |                |
| Water Monitoring              | 29,700         | 5,000           | 27,200         |
| Additional MACOG Staff        | 35,700         | 12,000          | 35,700         |
| Municipal/Partner Support     | 9,350          | 4,500           | 9,350          |
| Planning/Resource Development | 19,150         | 30,000          | 31,077         |
| Education/Outreach Provision  | 7,400          | 2,500           | 7,400          |
| Drainage Project              | 3,500          | 3,500           | 4,500          |
| <b>Project Expenses</b>       | <b>104,800</b> | <b>57,500</b>   | <b>115,227</b> |
| <b>Total Expenses</b>         | <b>168,460</b> | <b>117,950</b>  | <b>178,887</b> |
| <b>CHANGE IN NET ASSETS</b>   | <b>\$0</b>     | <b>\$57,299</b> | <b>\$0</b>     |

## SJRBC 2022 Local Government Appropriation Requests

|                                 | Acres in Basin | % of Basin | 2010 Population | % of County Population | 2022 Request Amount* | 2021 Local Govt Receipts |
|---------------------------------|----------------|------------|-----------------|------------------------|----------------------|--------------------------|
| Elkhart County                  | 292,108        | 27%        | 197,559         |                        | \$10,006             | \$10,006                 |
| City of Elkhart                 |                |            | 50,949          | 26%                    | \$4,437              | \$4,437                  |
| City of Goshen                  |                |            | 31,719          | 16%                    | \$2,762              | \$2,762                  |
| <b>Elkhart County Total:</b>    |                |            |                 |                        | <b>\$17,205</b>      | <b>\$17,205</b>          |
| LaGrange County                 | 247,370        | 23%        | 37,128          |                        | \$13,540             | \$13,540                 |
| Town of LaGrange                |                |            | 2,625           | 7%                     | \$1,030              | \$1,030                  |
| <b>LaGrange County Total:</b>   |                |            |                 |                        | <b>\$14,570</b>      | <b>\$14,570</b>          |
| Noble County                    | 201,256        | 19%        | 47,536          |                        | \$9,395              | \$9,395                  |
| City of Kendallville            |                |            | 9,862           | 21%                    | \$2,459              | \$2,459                  |
| <b>Noble County Total:</b>      |                |            |                 |                        | <b>\$11,854</b>      | <b>\$11,854</b>          |
| Steuben County                  | 157,004        | 15%        | 34,185          |                        | \$6,917              | \$3,500                  |
| City of Angola                  |                |            | 8,612           | 25%                    | \$2,330              | \$2,330                  |
| <b>Steuben County Total:</b>    |                |            |                 |                        | <b>\$9,247</b>       | <b>\$5,830</b>           |
| St. Joseph County               | 117,836        | 11%        | 266,931         |                        | \$3,055              | \$3,055                  |
| City of South Bend              |                |            | 101,168         | 38%                    | \$2,630              | \$3,500                  |
| City of Mishawaka               |                |            | 48,252          | 18%                    | \$1,255              | \$1,255                  |
| <b>St. Joseph County Total:</b> |                |            |                 |                        | <b>\$6,940</b>       | <b>\$7,810</b>           |
| Kosciusko County                | 65,280         | 6%         | 77,358          |                        | \$3,705              | \$3,492                  |
| Town of Syracuse                |                |            | 2,810           | 4%                     | \$140                | \$140                    |
| <b>Kosciusko County Total:</b>  |                |            |                 |                        | <b>\$3,845</b>       | <b>\$3,632</b>           |

Ttl Acres in Basin: 1,080,854    2022 Request Ttl\*: \$63,660    2021 Local Govt Receipts Ttl: \$60,901

\* 2022 requests are based on FY21 Operations Budget of \$63,660 (see note below)

**NOTE:** According to Indiana Code 14-30-3-24, the apportionment of the budget among member counties shall be in direct relationship to the amount of land area each county has in the river basin.

**PURPOSE:** *The St. Joseph River Basin Commission exists to provide a forum for the discussion, study and evaluation of water resource issues of common concern and foster cooperative planning and coordinated management of the basin's water and related land resources.*

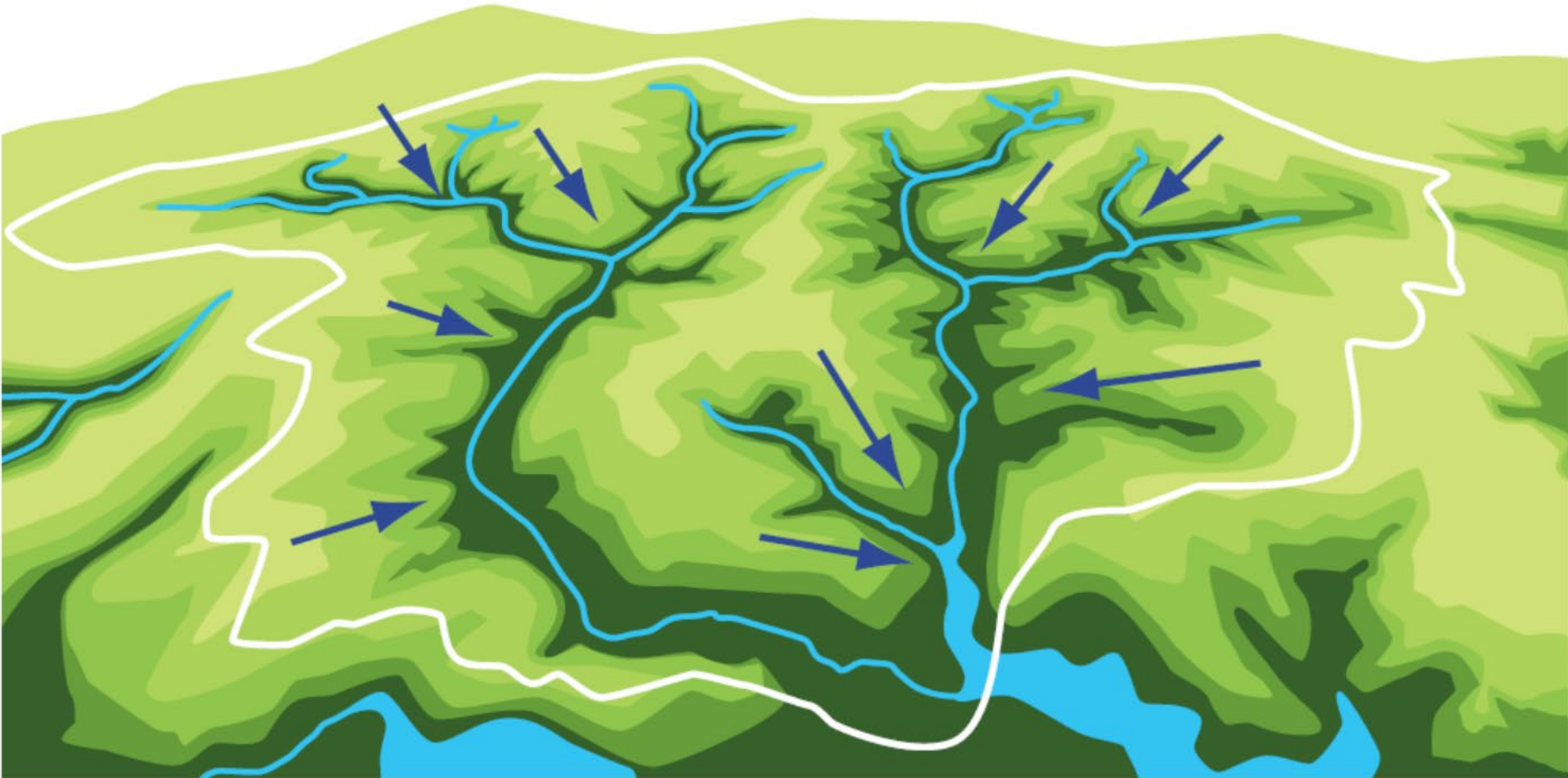
The St. Joseph River Basin Commission was created by the Indiana General Assembly in 1988 to address water quality issues in the St. Joseph River and all the lakes and streams that flow to it. The enabling statute of the Commission (IC 14-30-3) was amended in 2018 to expand the scope and powers of the Commission to address flooding as well. The Commission seeks to work with agencies, organizations and local units of government to:

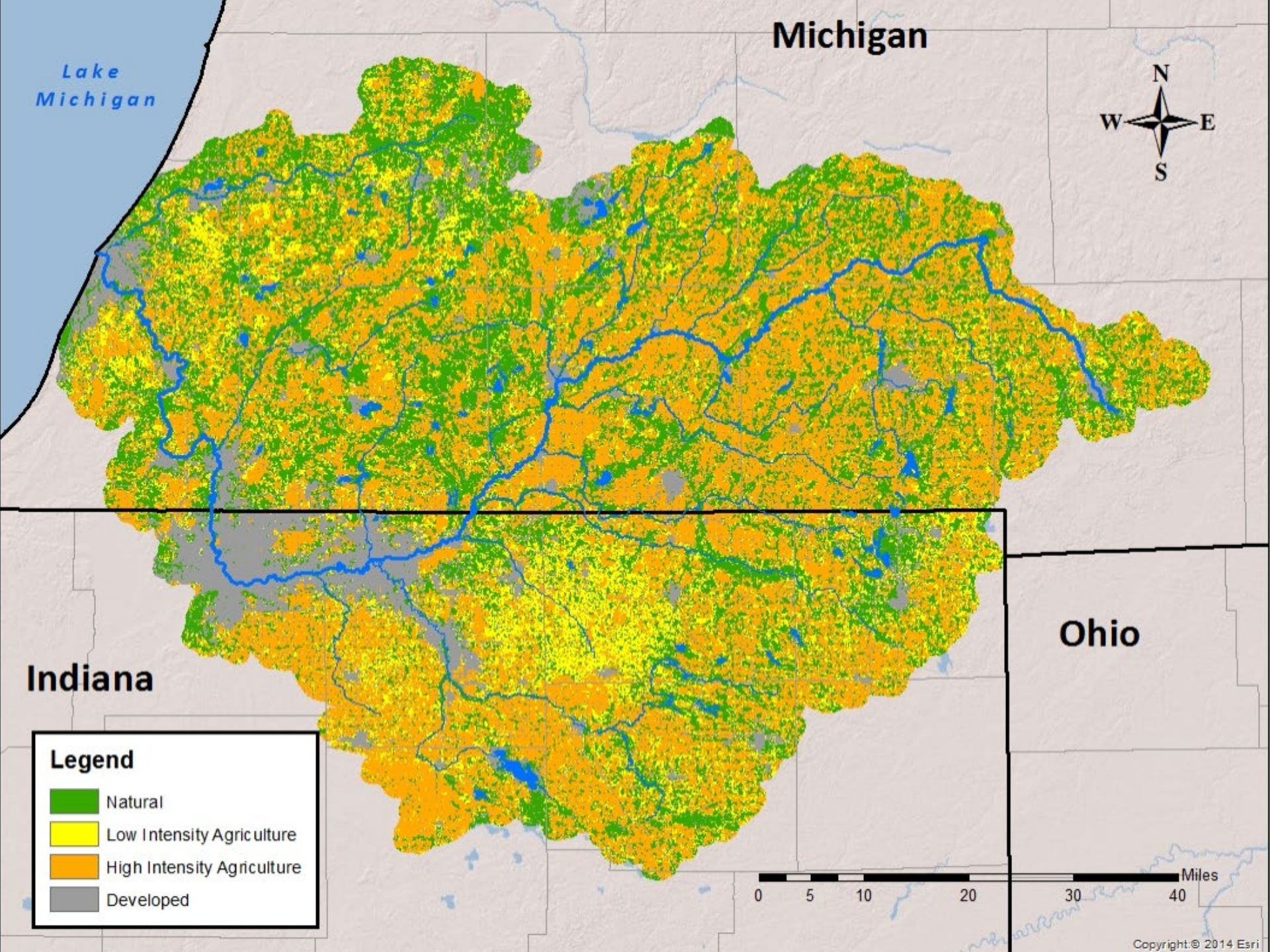
- Develop plans and tools to improve water quality or mitigate flooding in the basin;
- Coordinate monitoring of water quality and hydrology in the basin;
- Promote best practices for urban stormwater and rural drainage management;
- Develop strategies to increase water infiltration and storage capacity in the basin;
- Distribute reports on the Commission's objectives, studies, and findings;
- Make recommendations in matters related to the Commission's objectives to political subdivisions in the basin and to other public and private agencies;
- Act as a coordinating agency for programs and activities of other public and private agencies that are related to the Commission's objectives;
- Serve as an advocate of the basin's interests before Congress and federal, state and local government agencies.





If you care about water...





Michigan





Lake Michigan

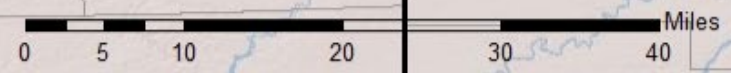


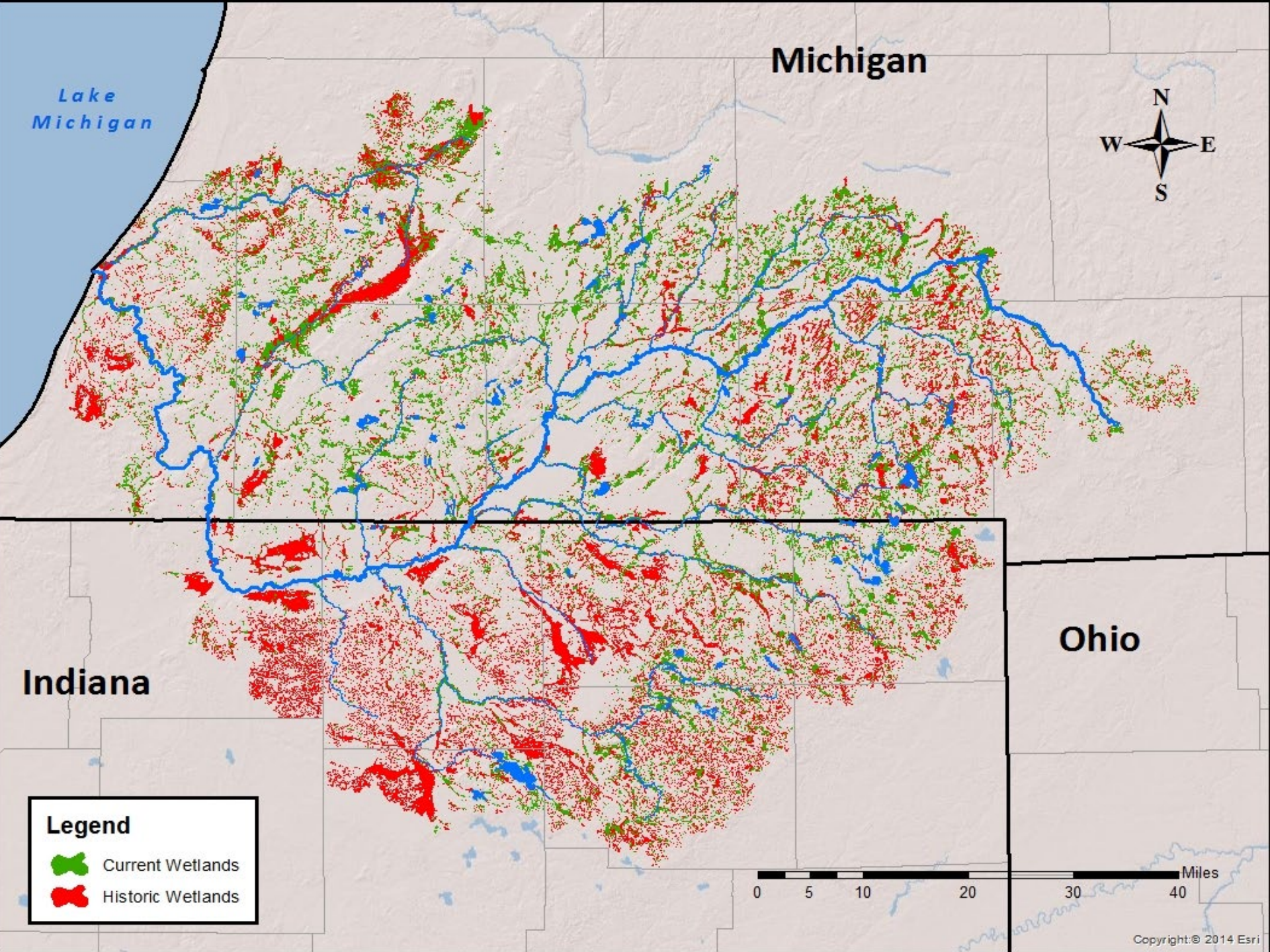
Ohio

Indiana

**Legend**

-  Natural
-  Low Intensity Agriculture
-  High Intensity Agriculture
-  Developed





Michigan

Lake Michigan

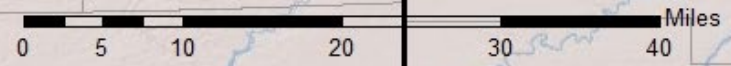


Ohio

Indiana

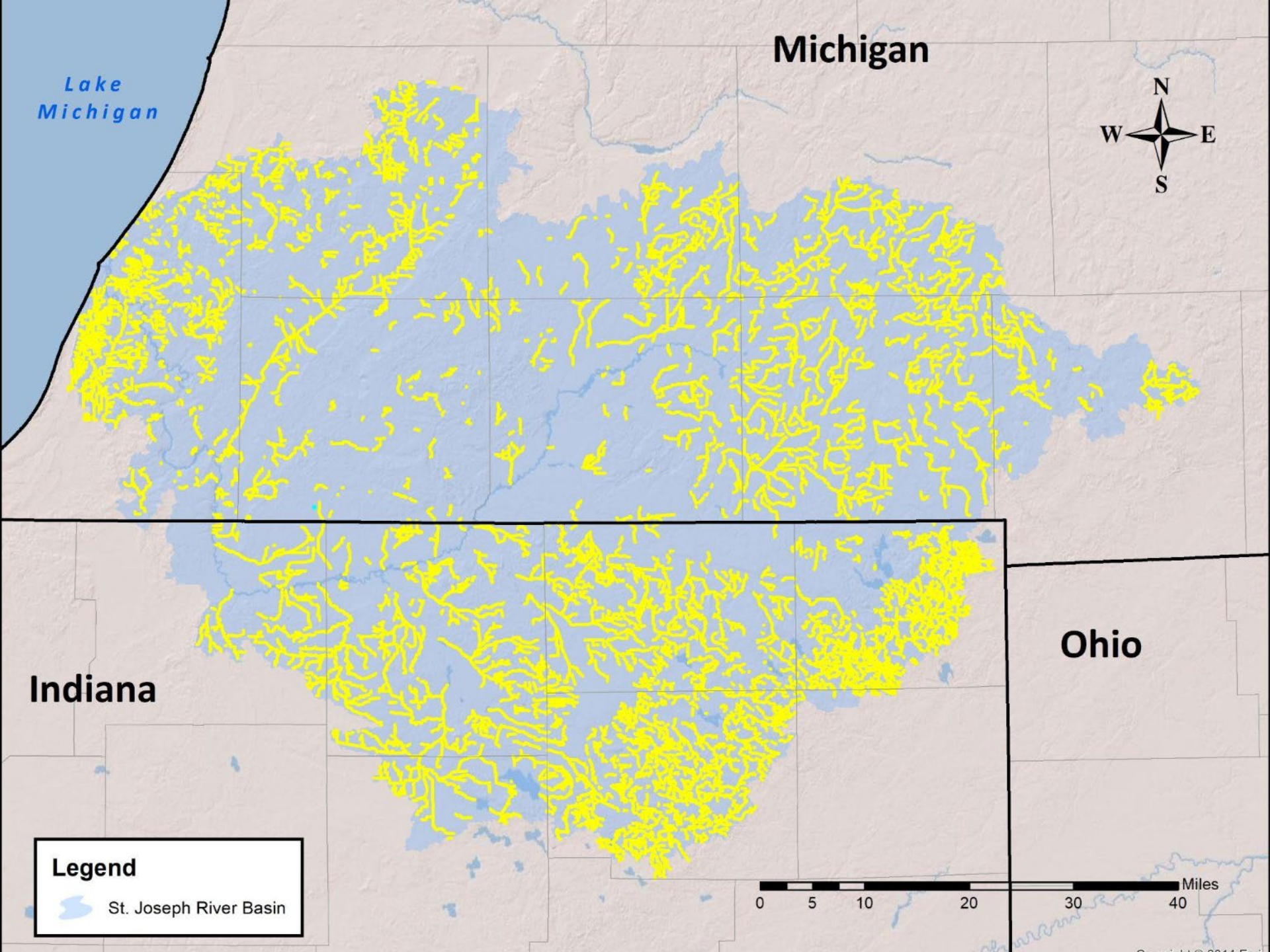
**Legend**

-  Current Wetlands
-  Historic Wetlands



# Our Projects





Lake Michigan


Michigan

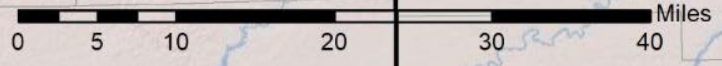


Indiana

Ohio

**Legend**

 St. Joseph River Basin

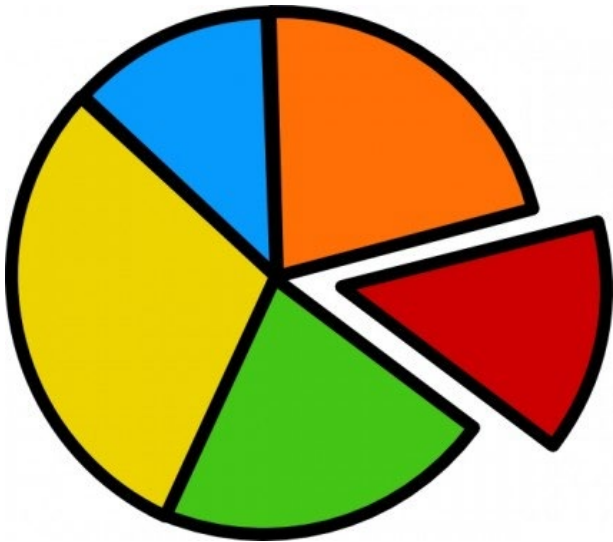




# Variable Benefit Apportionment

From the Indiana Drainage Code 369-27-39:

The percentage of the estimated cost  
of periodically maintaining the drain  
to be assessed against  
each tract of land...



**shall be based on  
the benefit accruing  
to each tract of land  
from the maintenance...**



# Determining benefits accrued

**Some benefits are accrued uniformly, but some are determined by the land...**

## **From the Indiana Drainage Code 36-9-27-112:**

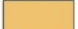
In determining benefits to land under Section 39, the board may consider:

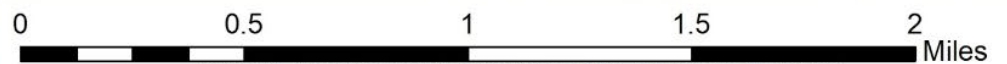
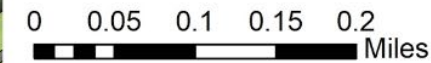
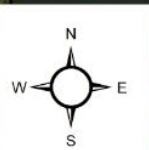
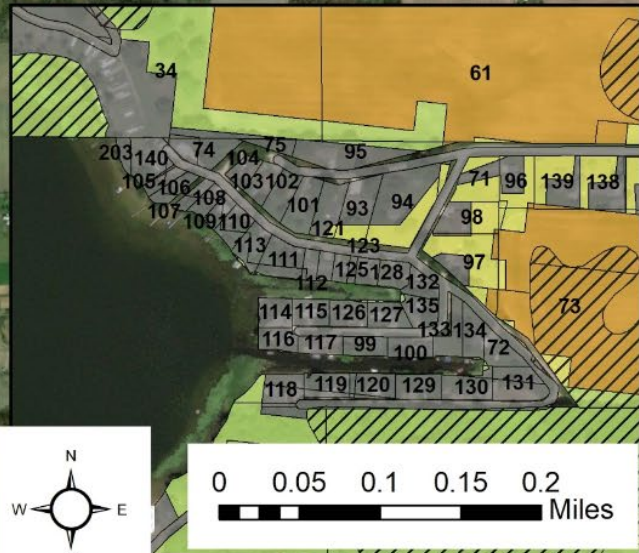
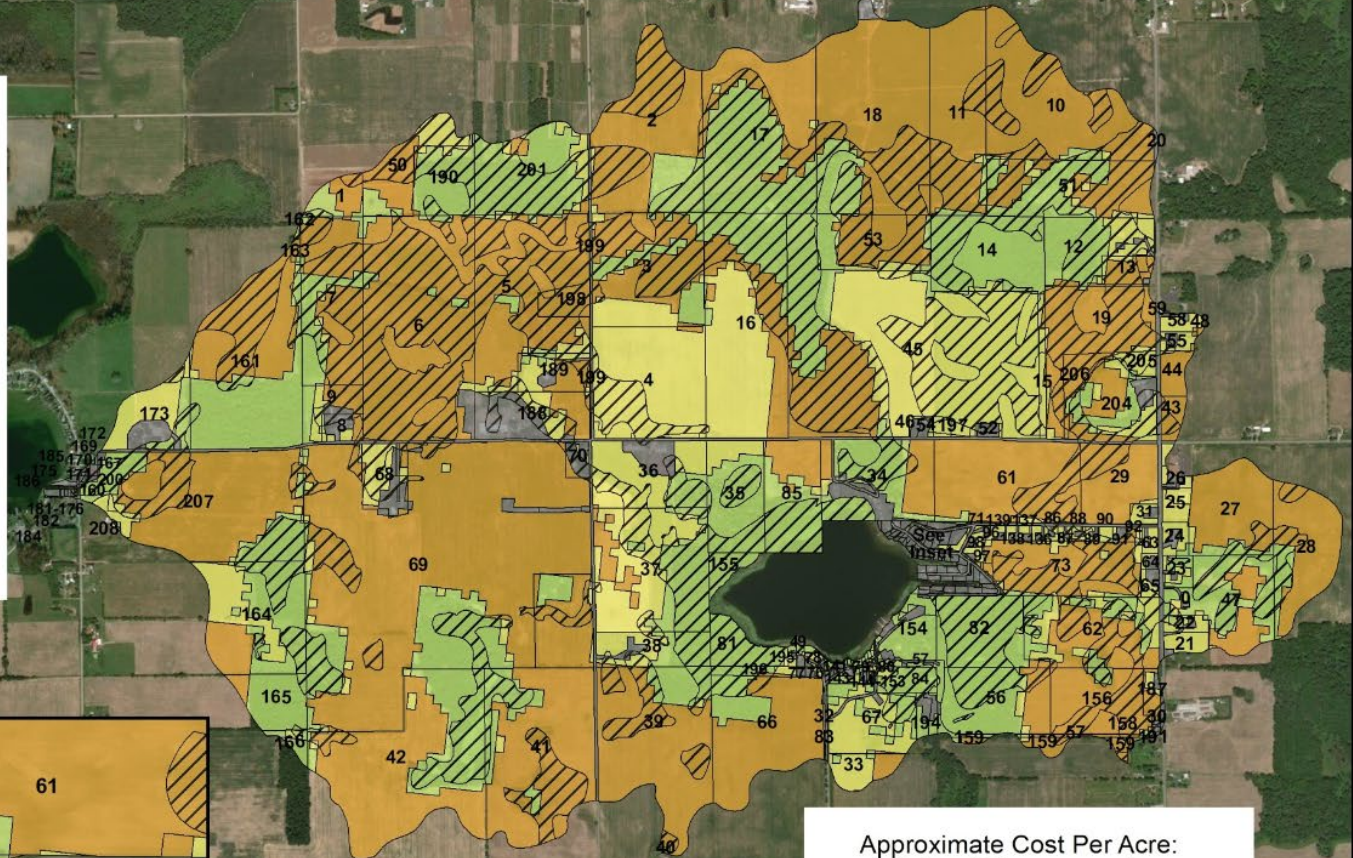
1. The watershed affected by the drain to be maintained;
2. The number of acres in each tract;
3. The total volume of water draining into or through the drain and the amount of water contributed by each land owner;
4. The land use;
5. The increased value accruing to each tract of land from the maintenance;
6. Whether the various tracts are adjacent, upland, upstream or downstream in relation to the main trunk of the drain;
7. Elimination or reduction of damage from floods;
8. The soil type; and
9. Any other factors affecting the maintenance.

# Clinton Case Drain

## Legend

### Land Use, Soil

-  Developed, Poorly Drained
-  Developed, Well Drained
-  Natural, Poorly Drained
-  Natural, Well Drained
-  Pasture/Hay, Poorly Drained
-  Pasture/Hay, Well Drained
-  Row Crops, Poorly Drained
-  Row Crops, Well Drained



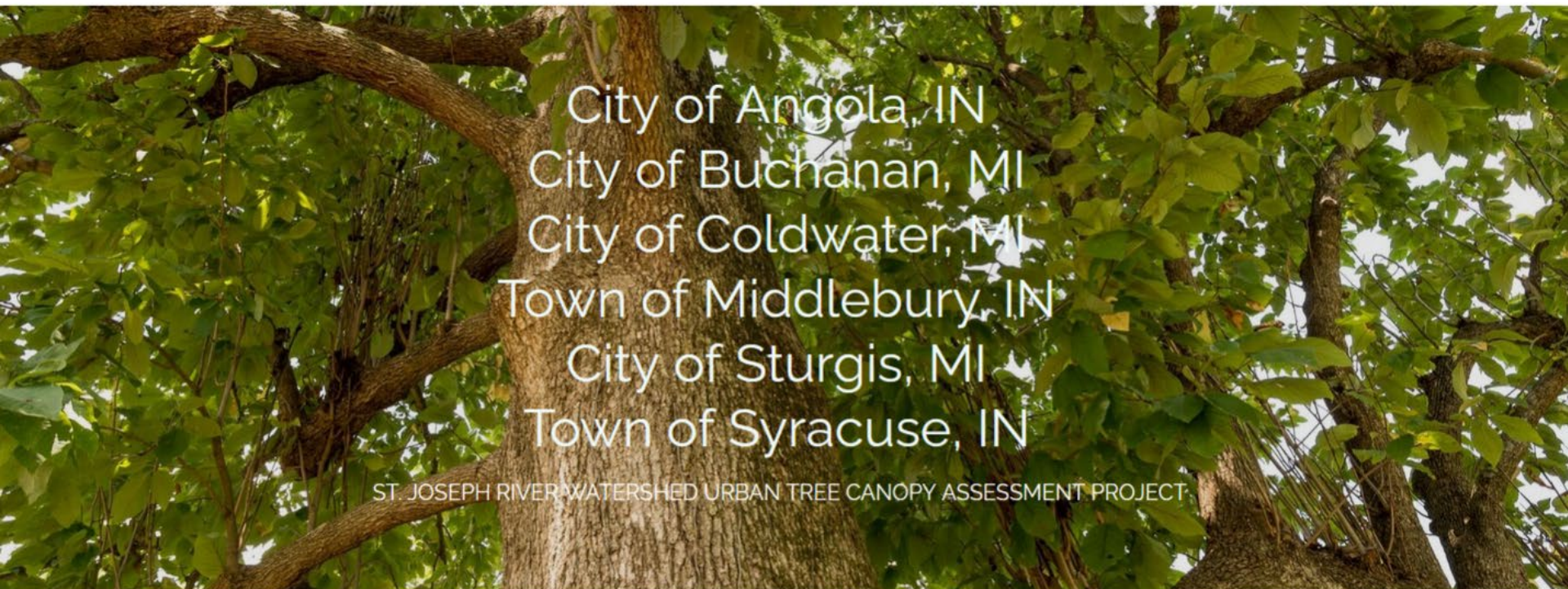
Approximate Cost Per Acre:  
(after \$20 per parcel)

|                           |         |
|---------------------------|---------|
| Developed, Poorly Drained | \$19.82 |
| Row Crops, Poorly Drained | \$18.44 |
| Developed, Well Drained   | \$11.10 |
| Row Crops, Well Drained   | \$10.32 |
| Grass/Hay, Poorly Drained | \$9.52  |
| Grass/Hay, Well Drained   | \$5.33  |
| Natural, All Soils        | \$4.96  |



# TREE CANOPY IN THE ST. JOSEPH RIVER WATERSHED

— [HOME](#) [PROJECT PARTNERS](#) [PROJECT OVERVIEW](#) [COMMUNITY ASSESSMENT RESULTS](#) [RECOMMENDATIONS](#) [MORE...](#) —



City of Angola, IN  
City of Buchanan, MI  
City of Coldwater, MI  
Town of Middlebury, IN  
City of Sturgis, MI  
Town of Syracuse, IN

ST. JOSEPH RIVER WATERSHED URBAN TREE CANOPY ASSESSMENT PROJECT

In 2019, ReLeaf Michigan, the Michigan Department of Natural Resources, the Indiana Department of Natural Resources, the St. Joseph River Basin Commission and Davey Resource Group, Inc. received a USDA Forest Service Great Lakes Restoration Initiative (GLRI) grant to assist six communities in the St. Joseph River watershed. The grant provided funding to assess tree canopy in each community and identify ways to increase and improve tree canopy to intercept stormwater, reduce runoff, and improve water quality within the St. Joseph River watershed and the Great Lakes basin. This web-based report describes the findings of the assessments and provides community forest management recommendations for each community.

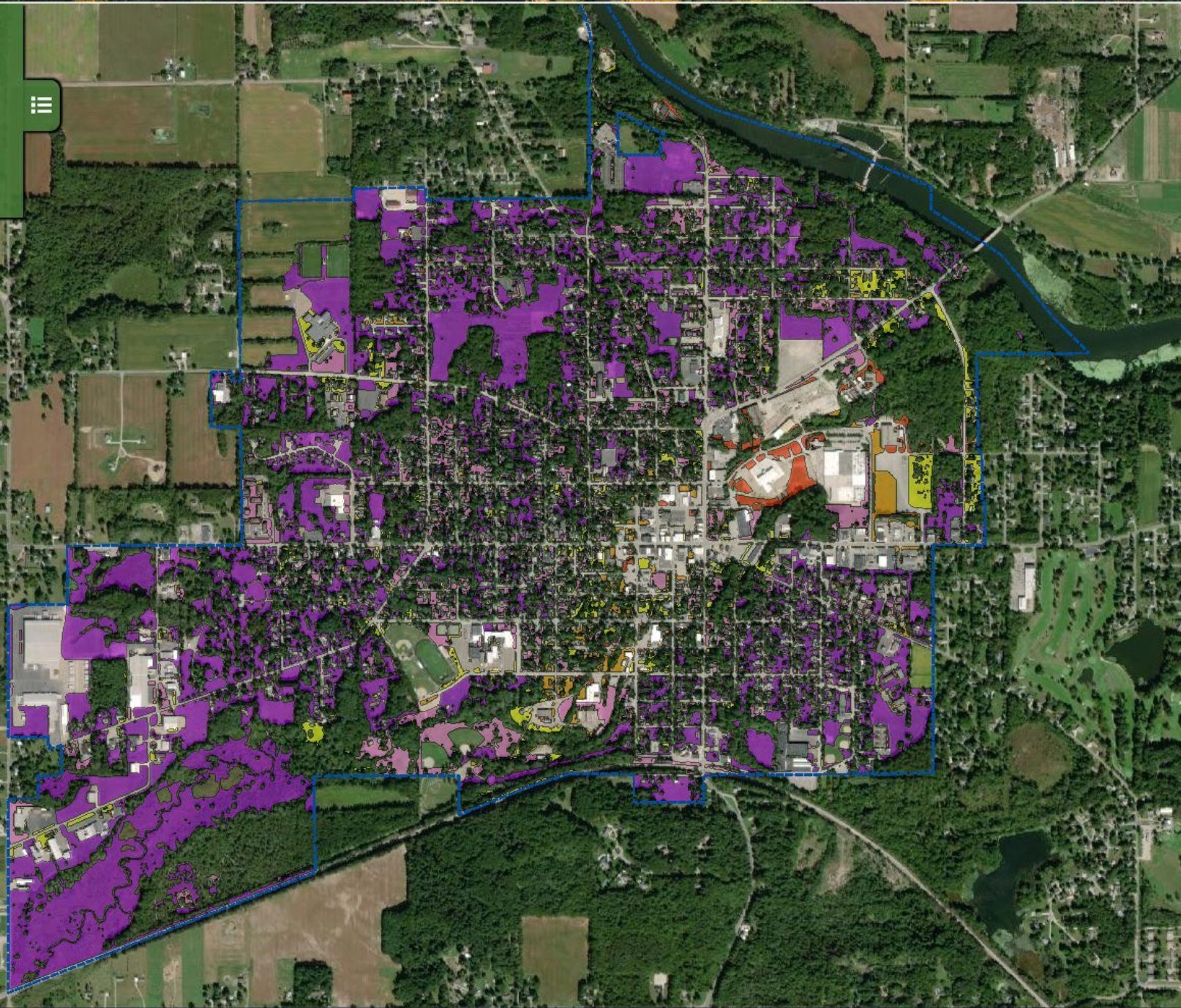
# Relief Michigan St. Joseph River Basin Urban Tree Canopy Assessment

## City Limits



## Priority Planting

-  Very High
-  High
-  Moderate
-  Low
-  Very Low



# Flood Hazard Study





# Water Monitoring



A stylized graphic of a river or stream, with a white path winding through green and blue areas, representing the St. Joseph River Basin.

# St. Joseph River Basin Commission

## Questions?

227 W. Jefferson Blvd.  
1120 County-City Bldg.  
South Bend, IN 46601

**[www.sjrbc.com](http://www.sjrbc.com)**

Contact: Matt Meersman  
[BasinDirector@macog.com](mailto:BasinDirector@macog.com)  
574.287.1829 ext.800