




INDIANA CHAMBERSM

LEADING BUSINESS | ADVANCING INDIANA

www.indianachamber.com


About

The Indiana Chamber of Commerce is the state's largest broad-based business advocacy organization. The Chamber has served Indiana's business community since 1922. The Chamber now serves over 26,000 members and customers annually. The Chamber advocates on behalf of its members in matters affecting Indiana's business climate including environmental regulation as well as other areas of concern.



Mission Statement

The Indiana Chamber works to “cultivate a world-class environment which provides economic opportunity and prosperity for the people of Indiana and their enterprises.”



Why is Water Important to the Indiana Chamber of Commerce?

- Water is a valuable resource and Indiana, unlike many areas of the country, is fortunate to have abundant water resources.
- The state has the highest fraction (in the country) of its economy that requires abundant water supplies.
- The drought that hit Indiana in 2012, the worst in decades, made it clear how many sectors of the economy depend on water availability, and in some areas, availability is limited by use.
- The dry conditions in July, August, and September of 2012, which were accompanied by extremely warm temperatures, made it clear that many of Indiana's local water supplies are vulnerable to drought. The preceding decade had been one with 3½ feet of rainfall above the long-term average and, as a result, energy, agriculture, and municipal suppliers had been expanding their water use.

INDIANA'S WATER SUPPLY AND ECONOMIC DEVELOPMENT

A six-month study on water resources in Indiana was released on August 8, 2014. While Indiana currently has abundant supplies compared to many areas of the country, the state ranks first in the United States in the percentage of its economy that depends on water. Proper management and a long-term plan are needed to ensure adequate fresh water for citizens and businesses in the future.

[Full Study](#) (high-res version [here](#); 4 MB)

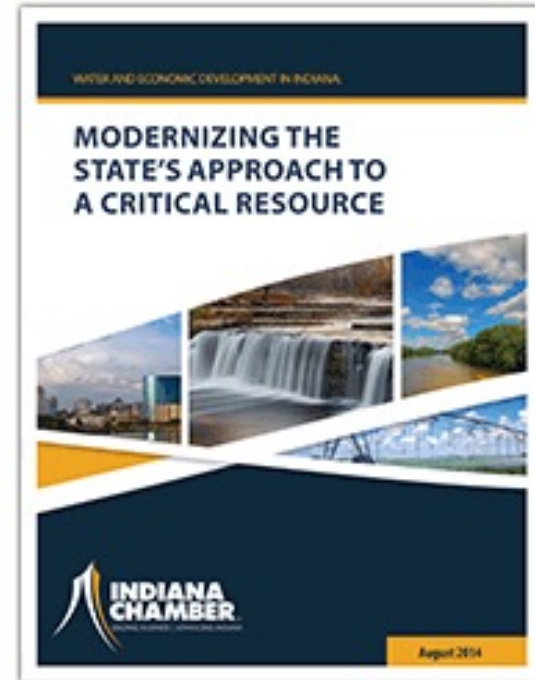
[Executive Summary](#)

[Video \(1 minute, 20 seconds\)](#)

[Statewide Map of Generalized Groundwater](#)

[Availability](#)

<https://www.indianachamber.com/news-resources/studies-reports/indianas-water-supply-economic-development/>



Greg Ellis
Vice President,
Energy, Environment and Federal Affairs

Greg joined the Indiana Chamber of Commerce in 2016. Previously, he served as an Administrative Law Judge with the Indiana Utility Regulatory Commission for six years. Greg has notable lobbying experience at the state and federal levels, as well as a history of working in the environmental law arena.

Among Greg's various roles with the State of Indiana, he served as the business ombudsman for the Indiana Department of Environmental Management and legal counsel for the Indiana Department of Natural Resources. Greg served as the Indiana representative to the Council of Great Lakes Governors during the development of the Great Lakes Compact. He was also the Chief Legal Counsel and Legislative Liaison for the Indiana Civil Right Commission.

Greg received his bachelor's degree from Indiana State University and his law degree from the Indiana University Robert H. McKinney School of Law.

Contact Greg at 317-284-6881 or gellis@Indianachamber.com

