

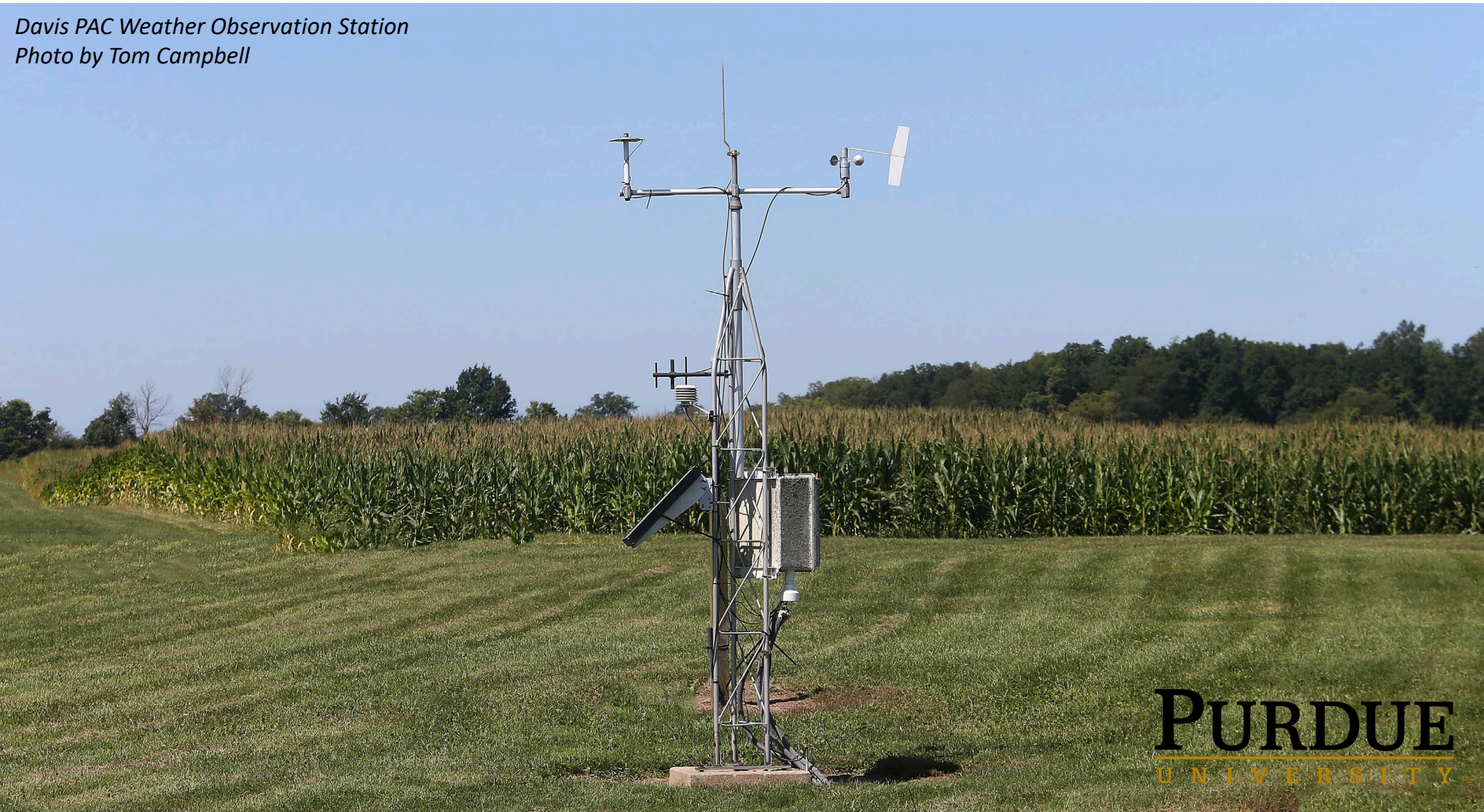


Drought Monitoring and the Indiana State Climate Office



*Dr. Beth Hall
Director, IN-SCO
Director, MRCC
August 2024*

*Davis PAC Weather Observation Station
Photo by Tom Campbell*



Indiana State Climate Office (IN-SCO)

About:

- Focus on state priorities
 - *Agriculture*
 - *Drought*
 - *Climate monitoring*
- More **outreach** than data tools
 - *Articles*
 - *Presentations*
 - *Interviews*
 - *Statewide coordination*
- More climate change linkages
- Programs
 - *CoCoRaHS*
 - *Mesonets*

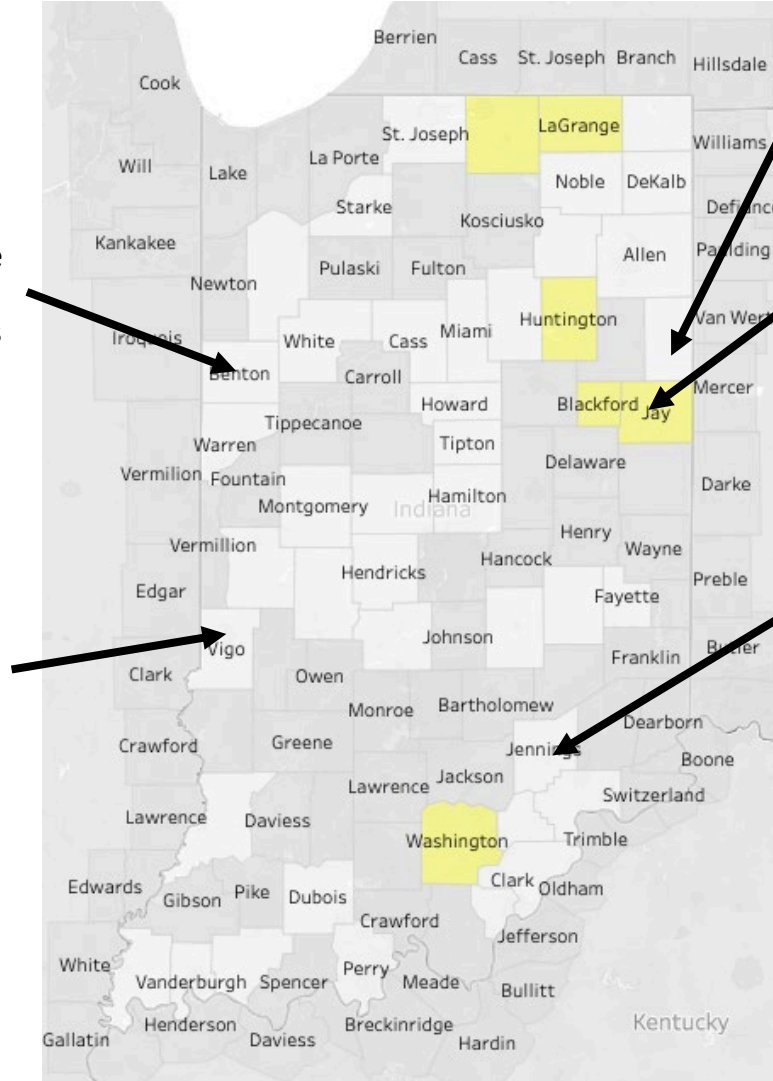
Indiana SCO

- University (Purdue)
- 80% State Climatologist
- \$40K operations
- < 1 FTE support
- Extension
- Agronomy

IN-SCO County Drought Monitoring

Benton (8/2): Areas in many soybean fields where it is evident there is more soil moisture than the plants want. Nodulation has been hindered. Lawns needing to be mowed 2x/wk.

Vigo (8/5): Steady rain all week has filled creeks and reservoirs. Pastures are green and healthy



ADAMS (8/4): Was leaning toward D1 or D2, but then got 2-3" of rain that just dumped. Totally changed drought status. Tho, so dry, water soaked in completely!

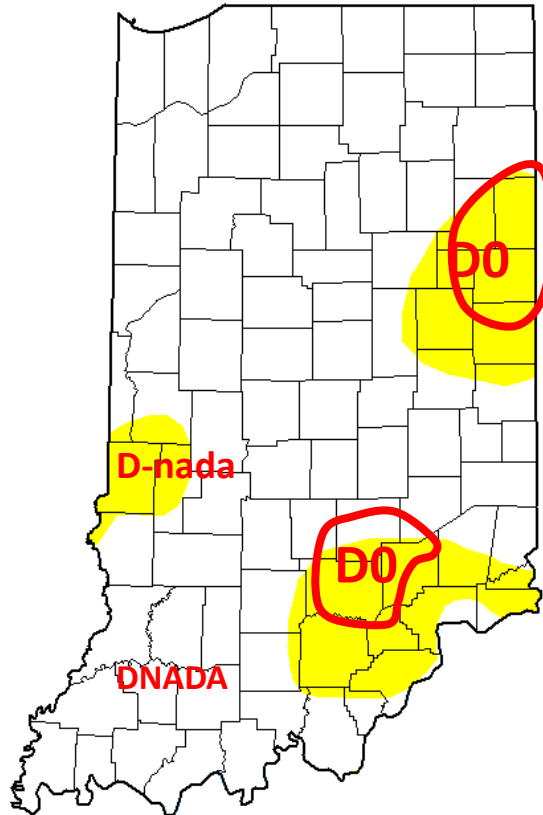
Jay (8/5): Lawns and pastures are brown.

Jennings (8/5): Standing water is starting to dry up

Clark (8/5): Plant life growing rapidly and lawns needed 2 mowings last week. Seasonal creeks have some standing water (not flowing) and ponds have gained some volume

IN-SCO County Drought Monitoring

U.S. Drought Monitor Indiana



~~July 30, 2024~~

(Released Thursday, Aug. 1, 2024)

Valid 8 a.m. EDT

Drought Conditions (Percent Area)

	None	D0-D4	D1-D4	D2-D4	D3-D4	D4
Current	82.08	17.92	0.00	0.00	0.00	0.00
Last Week 07-23-2024	88.81	11.19	0.00	0.00	0.00	0.00
3 Months Ago 04-30-2024	100.00	0.00	0.00	0.00	0.00	0.00
Start of Calendar Year 01-02-2024	10.70	89.30	81.12	12.88	0.00	0.00
Start of Water Year 09-26-2023	1.38	98.62	85.30	0.00	0.00	0.00
One Year Ago 08-01-2023	46.31	53.69	19.37	0.00	0.00	0.00

Intensity:

 None	 D2 Severe Drought
 D0 Abnormally Dry	 D3 Extreme Drought
 D1 Moderate Drought	 D4 Exceptional Drought

The Drought Monitor focuses on broad-scale conditions. Local conditions may vary. For more information on the Drought Monitor, go to <https://droughtmonitor.unl.edu/About.aspx>

Author:

Lindsay Johnson
National Drought Mitigation Center

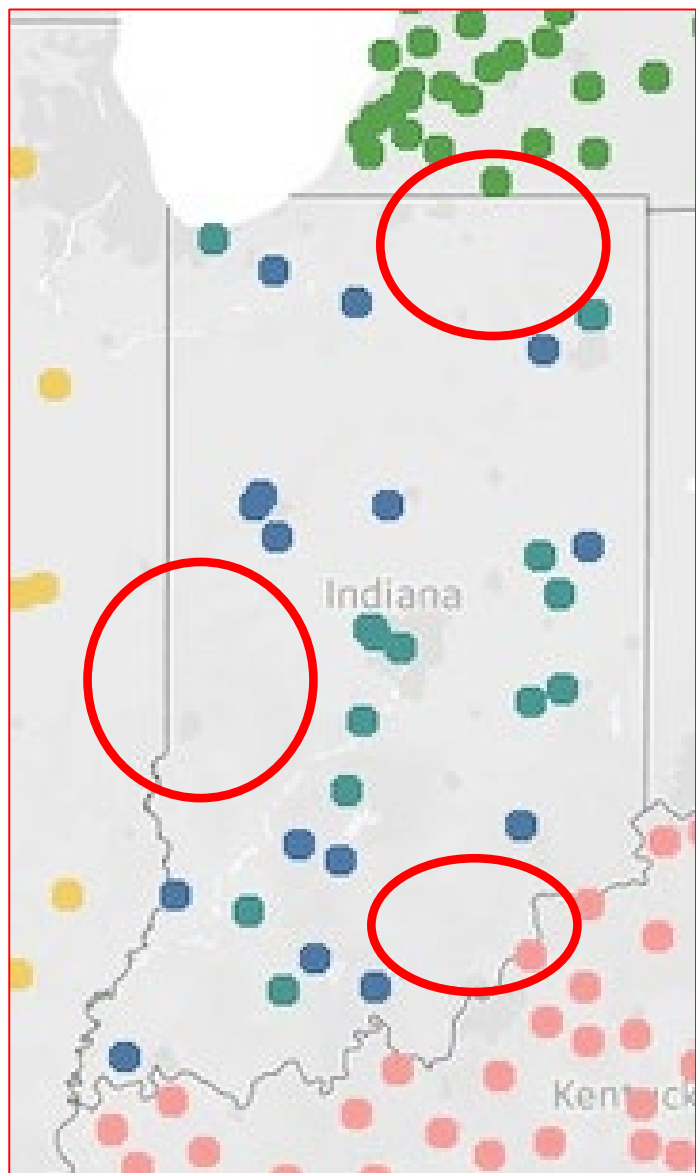


droughtmonitor.unl.edu

Recommendations for 8/6/2024

- Lots of rain through most of state.
- Western D-0 area can be removed
- Eastern and southeastern D0 areas should be reduced in size due
- Ground reports at county level suggest conditions have been improving in most places
- Soil moisture data supports improvements in E and SE locations
- Lots of rain along Ohio River has pulled the SE D0 area northward to eliminate those river counties.

Challenges Facing IN



Significant gaps in coverage!

- *Weather typically comes from west*
- *Blind awareness in IN for:*
 - Storms
 - Icing events
 - Timing of strong wind events
- Lack of soil information
 - *Temperature*
 - *Moisture*
- Lack of ET information
- Disparity in value-added tools
 - *Monitoring*
 - *Decision support*
 - *Alerts*