

# RIVER RIDGE

## COMMERCE CENTER

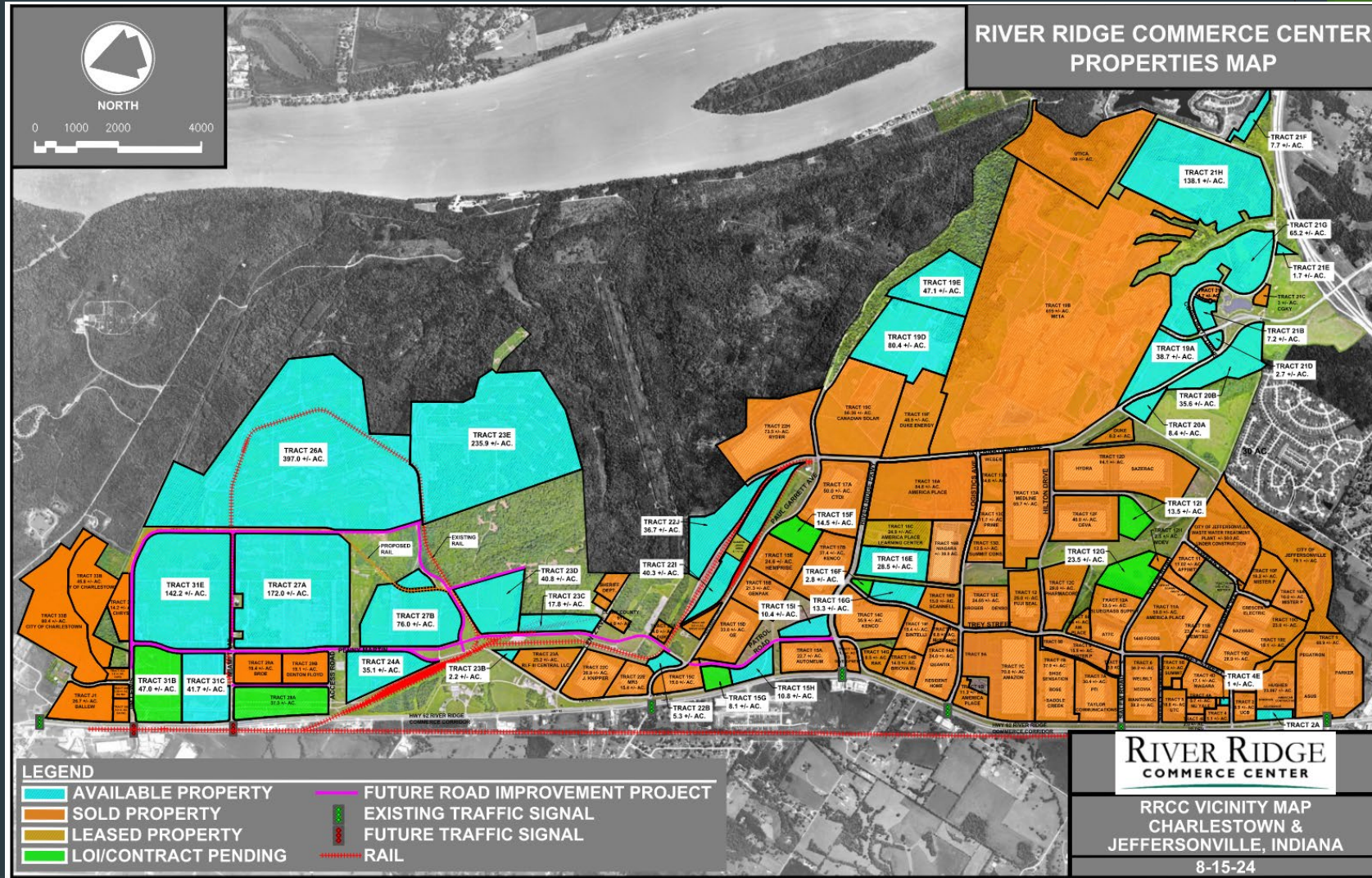


PRESENTED BY:  
MARC HILDENBRAND, P.E.  
CHIEF DIRECTOR-ENGINEERING & OPERATIONS  
RIVER RIDGE DEVELOPMENT AUTHORITY

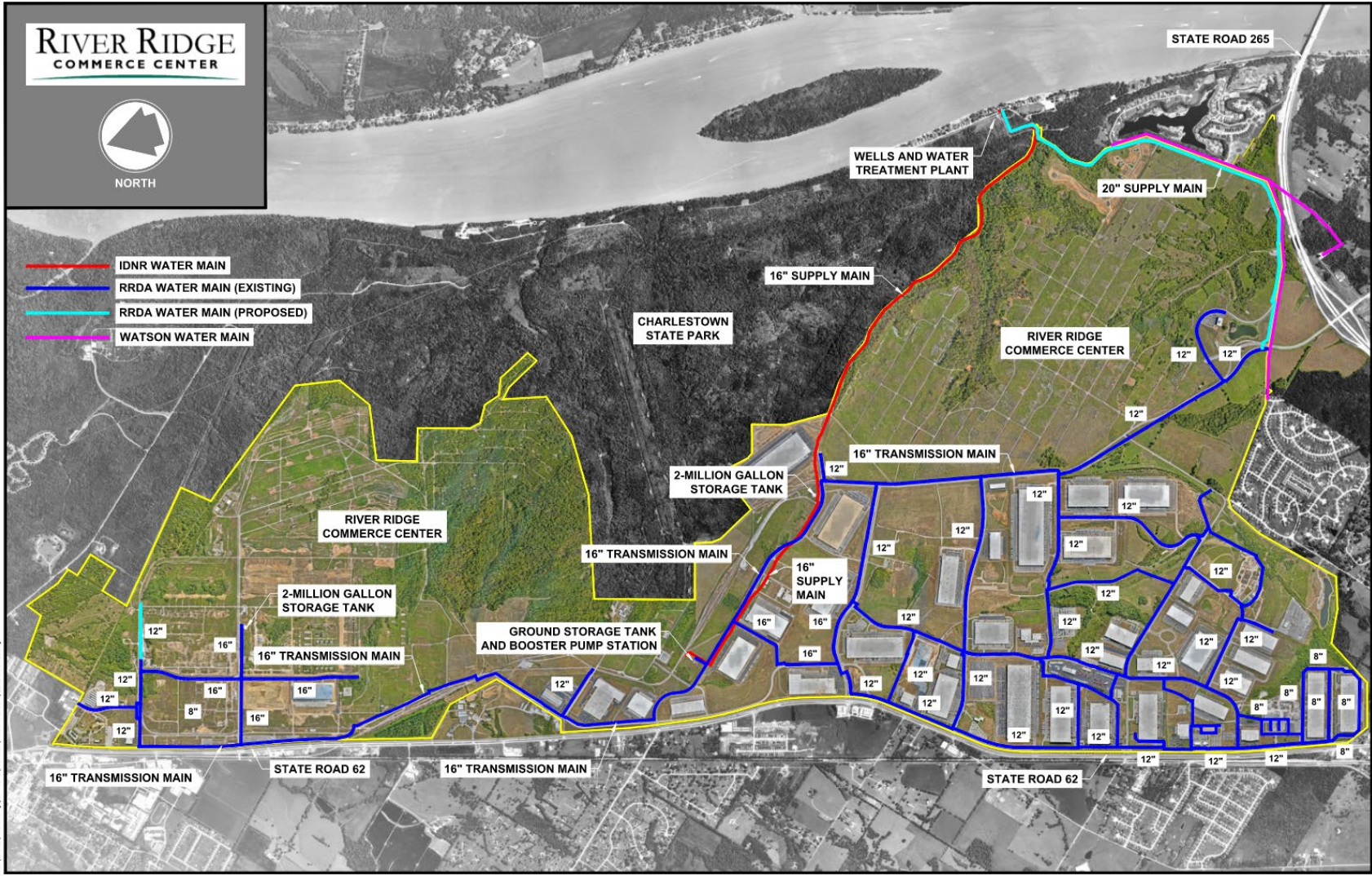
# RIVER RIDGE COMMERCE CENTER VICINITY MAP



# RIVER RIDGE COMMERCE CENTER PROPERTIES MAP



# RIVER RIDGE COMMERCE CENTER WATER SYSTEM



# HISTORIC WATER SUPPLY/AVAILABILITY

- Water is supplied for treatment from the Ohio River Outwash Aquifer.
- Numerous studies have been performed on the aquifer over the years, and it is believed there is a capacity of over 100 million gallons per day.
- The aquifer was used by the Department of the Army during the operation of the Indiana Army Ammunition Plant from World War II through the Vietnam War.
- The Army used seven (7) Rainey wells positioned along the Ohio River to supply approximately 70 million gallons per day for the operation of the ammunition plant

# CURRENT USE OF AQUIFER

- In 2011, the Indiana Department of Natural Resources (IDNR) completed construction of new tubular wells and a water treatment facility that provided the River Ridge Commerce Center (“RRCC”) with 3 million gallons per day capacity.
- IDNR completed construction in the middle 2024 on an expansion to the wells and water treatment facility to increase the capacity to 6 million gallons per day.
- Current average usage of water at the River Ridge Commerce Center is just over 2 million gallons per day but is expected to increase to over 5 million gallons per day by 2026 with the addition of new businesses at the park.

# FUTURE USE OF AQUIFER

- The RRDA is focusing marketing efforts for new businesses on industries that typically have high water usages like advanced manufacturing and food and beverage producers.
- It is expected that by full development of the RRCC, the 20 million gallons per day reservation from IDNR will mostly be used.
- Even with that high usage amount, there is still more than 80 million gallons per day capacity in the aquifer for use elsewhere.