

Riverfront

FORT WAYNE



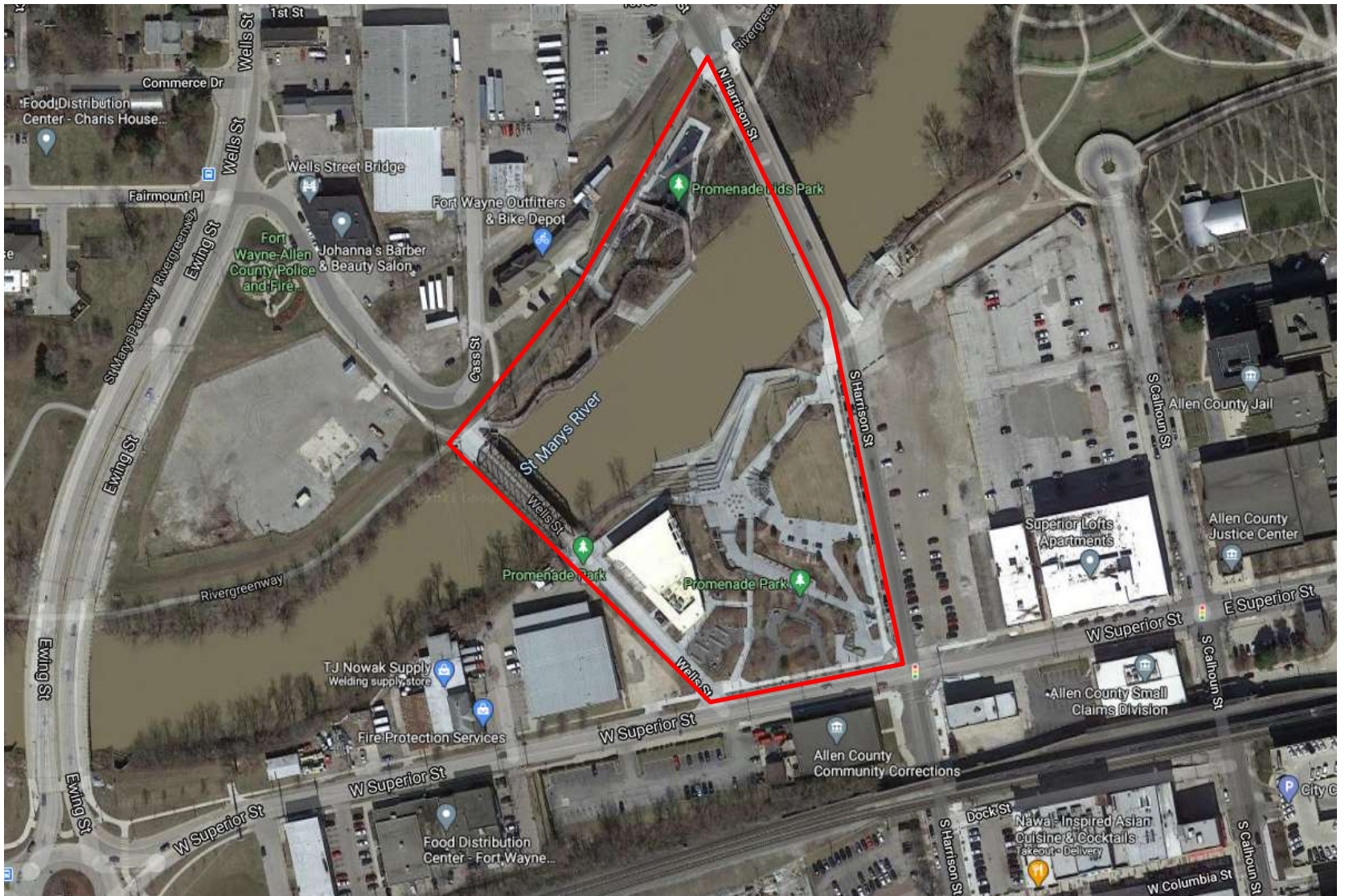
Always Moving.

Riverfront Development – Phase I



2015 Allen County GIS

Riverfront Development – Phase I



2021 Google Maps

Riverfront Development – Phase I



Riverfront Development – Phase I



Riverfront Development – Phase I



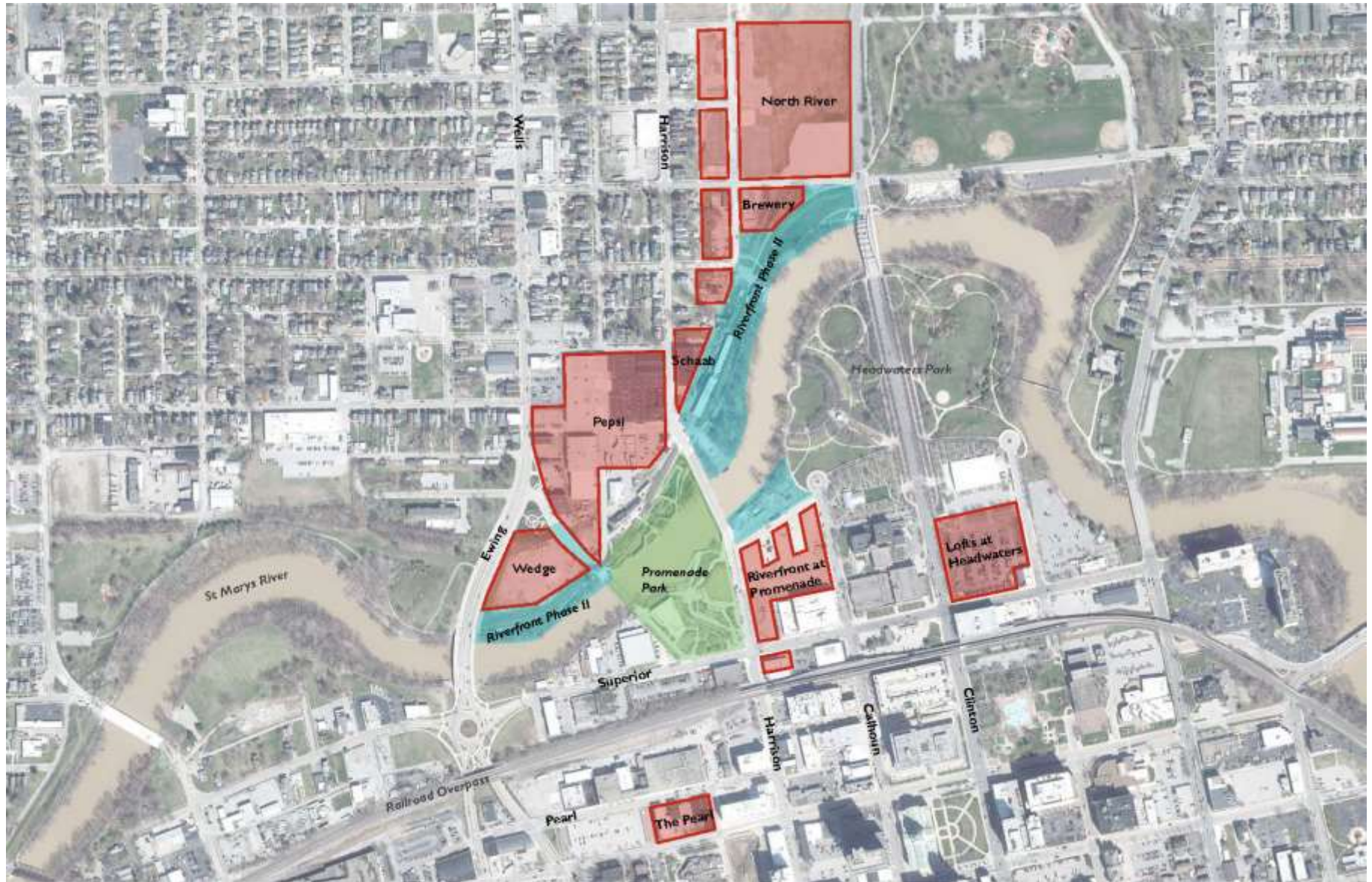
Promenade Park Grand Opening

Riverfront Development – Phase I



Promenade Park Grand Opening

Riverfront Development – Phase II



Riverfront Development – Phase II

Site Design Legend

- 1 Relocated Crosswalk and Curb Ramps
- 2 Urban Trail
- 3 Two On-Street Parking Spaces
- 4 Open Plaza (Outdoor Dining/Retail)
- 5 Seat/Retaining Wall River Overlook
- 6 Removable Bollards
- 7 Guardrail
- 8 Interpretive Signage
- 9 Outfall Structure/Overlook
- 10 Utility Control Panel
- 11 Stone Boulder Seawall
- 12 Bio-Retention Storm Bell
- 13 Siphon Tailbox
- 14 Native Riparian Understorey Plantings
- 15 Existing Retaining Wall
- 16 Bike Racks
- 17 Vent Shaft
- 18 Open Lawn
- 19 Drop Shaft
- 20 Air Discharge Pipe
- 21 Existing Tree Cover
- 22 Headwater's Park/Cathoon Street Connection



Riverfront Phase IIA

Conceptual Plan
June 24, 2021



Riverfront Development – Phase II



BOULDER MOUND

Riverfront Development – Phase II



Riverfront Development – Phase II



Riverfront Development – Phase II



Riverfront at Promenade Park

- **\$88,733,000**
- **224 living units**
- **38,000 sf commercial space**
- **912-space parking garage**
- **Garage: early 2022**
- **Residential and Commercial: early 2023**



Lofts at Headwaters Park

- **\$67,750,000**
- **232 living units**
- **12,000 sf retail**
- **651-space parking garage**
- **Remediation start late 2021**
- **Garage: late 2022**
- **Residential and Commercial: 2023**



Upcoming Private Development



THE PEARL

Upcoming Private Development



THE WEDGE

Upcoming Private Development



Riverfront

FORT WAYNE



Always Moving.

