



More than a Project™

A black and white photograph of two construction workers in a trench. One worker is in the center, wearing a white shirt and a white hard hat, looking down. The other worker is on the right, wearing a dark shirt and a dark hard hat, also looking down. They are surrounded by concrete structures and pipes. The image is partially overlaid by a dark blue diagonal shape in the top left corner.

Strategic Infrastructure Investments, Asset Management, and Holistic Planning Approaches

Dylan L. Lambermont, P.E. // Executive Vice President



Presentation Content



What is Asset Management?



Why is it Important?



Examples!



Impact



What is Asset Management?

An asset management plan is:

Indiana Finance Authority: A **document** or set of documents that assist in the long-term management of the assets necessary to support cost-effective, proactive decisions.

US EPA: The **practice** of managing infrastructure capital assets to minimize total cost of owning and operating them, while delivering the desired service level.

ACoE: A risk-informed decision-making **approach** that assesses the life cycle of an asset portfolio.

A documented practice or approach



What is Asset Management?

An asset management plan is:

Indiana Finance Authority: A document or set of documents that assist in the **long-term** management of the assets necessary to support cost-effective, **proactive** decisions.

US EPA: The practice of **managing** infrastructure capital **assets** to minimize total cost of owning and operating them, while delivering the desired service level.

ACoE: A **risk-informed** decision-making approach that assesses the **life cycle** of an asset portfolio.

A documented practice or approach
to long-term, risk-informed and proactive
decision making



What is Asset Management?

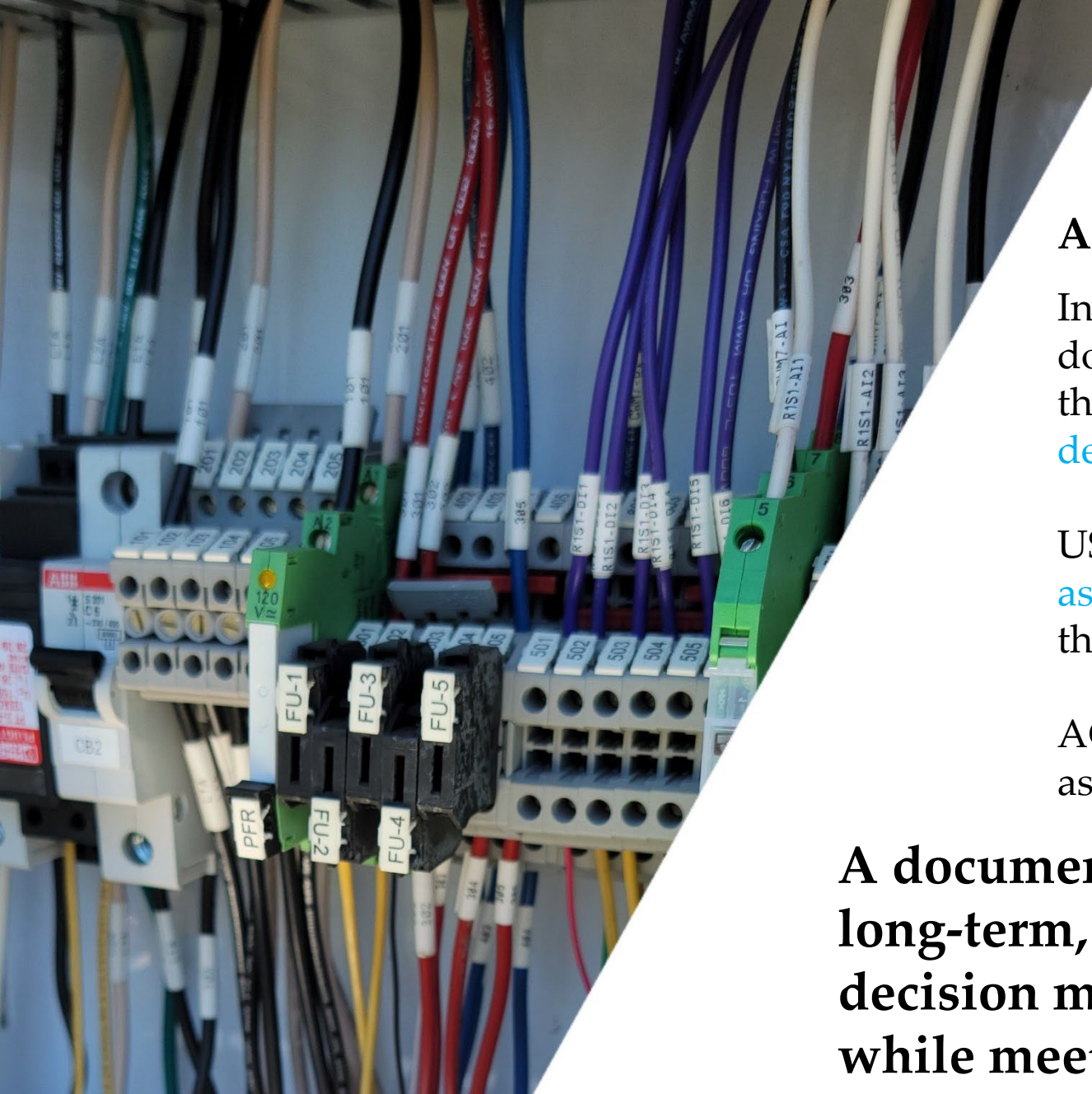
An asset management plan is:

Indiana Finance Authority: A **document** or set of documents that assist in the **long-term** management of the assets necessary to support **cost-effective, proactive decisions**.

US EPA: The **practice** of **managing** infrastructure capital **assets** to minimize total **cost** of owning and operating them, while delivering the desired **service level**.

ACoE: A **risk-informed** decision-making **approach** that assesses the **life cycle** of an asset portfolio.

A documented practice or approach to long-term, risk-informed and proactive decision making to **reduce overall costs while meeting an established level of service.**



What is Asset Management?

An asset management plan is:

Indiana Finance Authority: A **document** or set of documents that assist in the **long-term** management of the assets necessary to support **cost-effective, proactive decisions**.

US EPA: The **practice** of **managing** infrastructure capital **assets** to minimize total **cost** of owning and operating them, while delivering the desired **service level**.

ACoE: A **risk-informed** decision-making **approach** that assesses the **life cycle** of an asset portfolio.

A documented practice or approach to long-term, risk-informed and proactive decision making to reduce overall costs while meeting an established level of service.



Why is it Important?

Decisions are driven by information

Horizon is long-term (20 years)

Established level of service

Proactive

Focus on limiting risk

Costs are directly related to level of service

It's an ongoing approach based on a living document

What is Asset Management?



A proper asset management plan supports:

technical

managerial

financial

capacities so the organization can achieve its desired level of service.

What is Asset Management?

Technical

Maps
Inventory
Asset ratings
Level of service
Priority improvements
Replacement program
Operations & maintenance
(O&M) planning

Managerial

Description of organization
Personnel
Property
Procedures
Certifications and licenses
Contracting and purchasing

Financial

Budget
Financial statements
Cash flow projections
Debt
Rate structures
Audits



What is Asset Management?

Inventory (knowing what you have)

Asset ID	Asset Description	Type	Location		Notes	Effective Life				
			Area	Room		Year placed into service	Asset Age (yrs)	Total (yrs)	Remaining Life (yrs)	Useful Life Replacement Date
	HSP No.1	Split Case	WTP 1	Filter Pipe Gallery	Flowserve	2012	11	30	19	2042
	HSP No.2	Split Case	WTP 1	Filter Pipe Gallery	Flowserve	2012	11	30	19	2042
	HSP No.3	Split Case	WTP 1	Filter Pipe Gallery	Flowserve	2012	11	30	19	2042
	HSBS No. 1	Centrifugal	HSBS	Main	382A BF	2000	23	30	7	2030
	HSBS No. 2	Centrifugal	HSBS	Main	382A BF	2000	23	30	7	2030
	NTBS No. 1	Centrifugal	NT	Pumping Room	PACO 5X5X7 VL; Not Used	2004	19	30	11	2034
	NTBS No. 2	Centrifugal	NT	Pumping Room	PACO 5X5X7 VL; Not Used, large crack in pump	2004	19	30	11	2034
	NTBS No. 3	Centrifugal	NT	Pumping Room	PACO 5X5X7 VL; Not Used	2004	19	30	11	2034
	TP2BS No. 2	Split Case	WTP 2	BS	Peerless: Model No. C-825A, Serial No. 9927032147-10-A. Rust throughout exterior	1994	29	30	1	2024
	TP2BS No. 1	Split Case	WTP 2	BS	Peerless: Model No. C-825A, Serial No. 9927032146-10-A. Rust throughout exterior	1994	29	30	1	2024
	TP2 Chlorine Booster Pump	Centrifugal	WTP 2	Chlorine	Goulds (Xylem) Model No. 7GBC1012R0	2009	14	30	16	2039
	HSP No. 4 (Marked as HSP No. 3, Formerly HSP No. 2)	Centrifugal	WTP 2	Filter Pipe Gallery	Likely replaced with motors and VFDs in 2009	2009	14	30	16	2039
	HSP No. 5 (Marked as HSP No. 4, Formerly HSP No. 1)	Centrifugal	WTP 2	Filter Pipe Gallery	Likely replaced with motors and VFDs in 2009	2009	14	30	16	2039
	HSP No. 6 (Marked as HSP No. 5)	Centrifugal	WTP 2	Filter Pipe Gallery	E1-44305	1984	39	30	-9	2014

What is Asset Management?

Inventory



Well 5

IMG_7447



Michael Wheeler
Edited 8 days ago

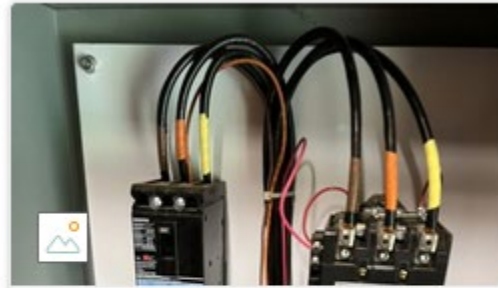


Well 5

IMG_7463



Michael Wheeler
Edited 8 days ago



Well 5

IMG_7457



Michael Wheeler
Edited 8 days ago

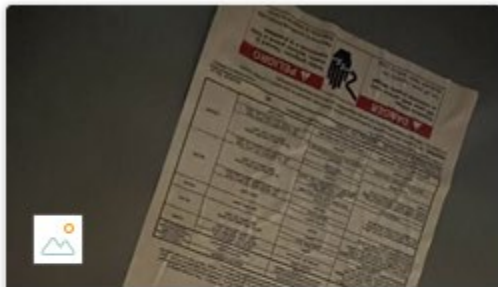


Well 5

IMG_7446



Michael Wheeler
Edited 8 days ago



Well 5

IMG_7462



Michael Wheeler
Edited 8 days ago



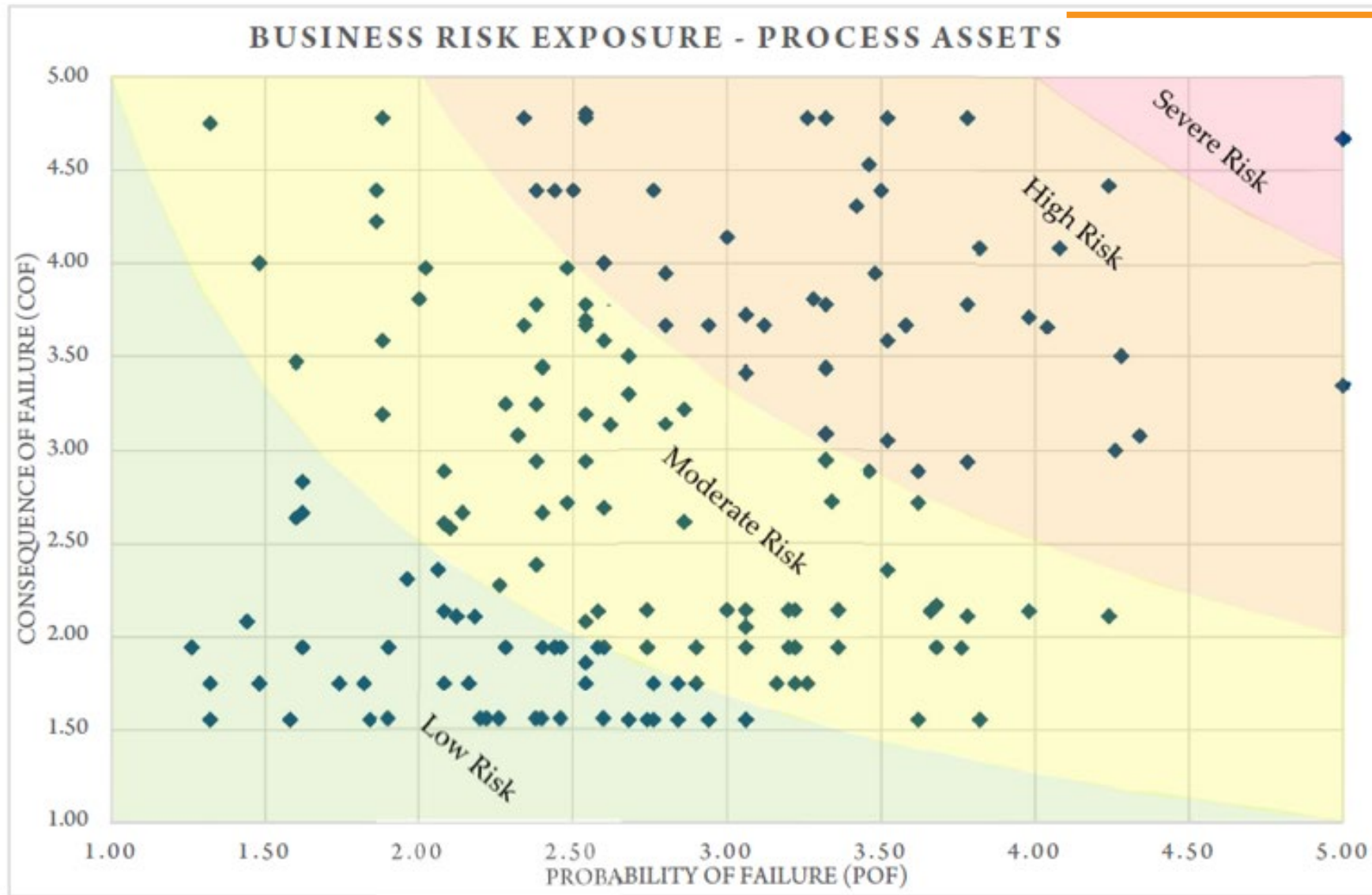
Well 5

IMG_7456



Michael Wheeler
Edited 8 days ago

What is Asset Management?

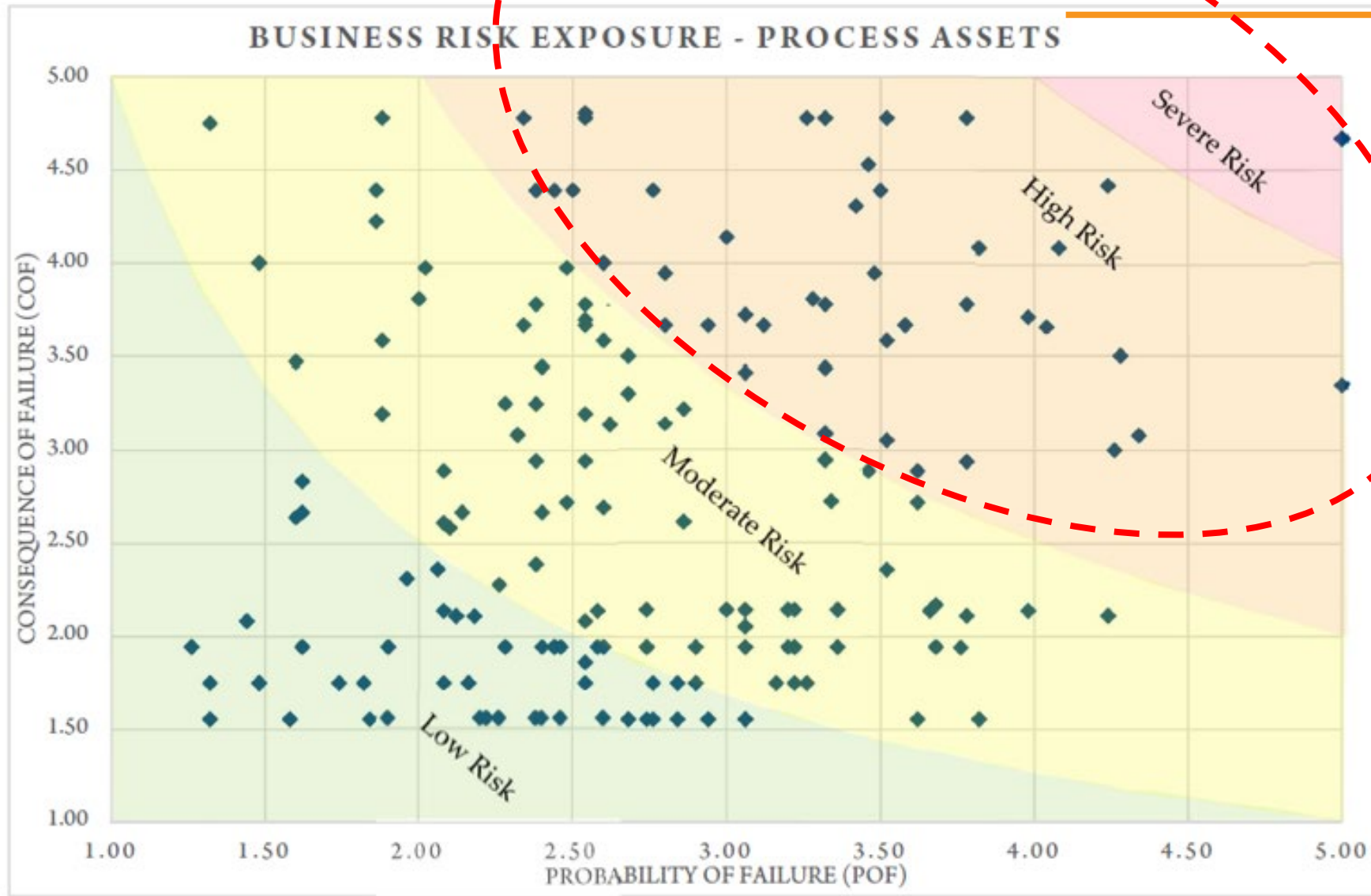


Risk Assessment

How likely is a failure?

What would happen if asset fails?

What is Asset Management?



Level of Service

Weighted rating system

How to be Impactful

Documentation

Communication

Make it part of operations

Update and maintain

Revisit and re-evaluate

