

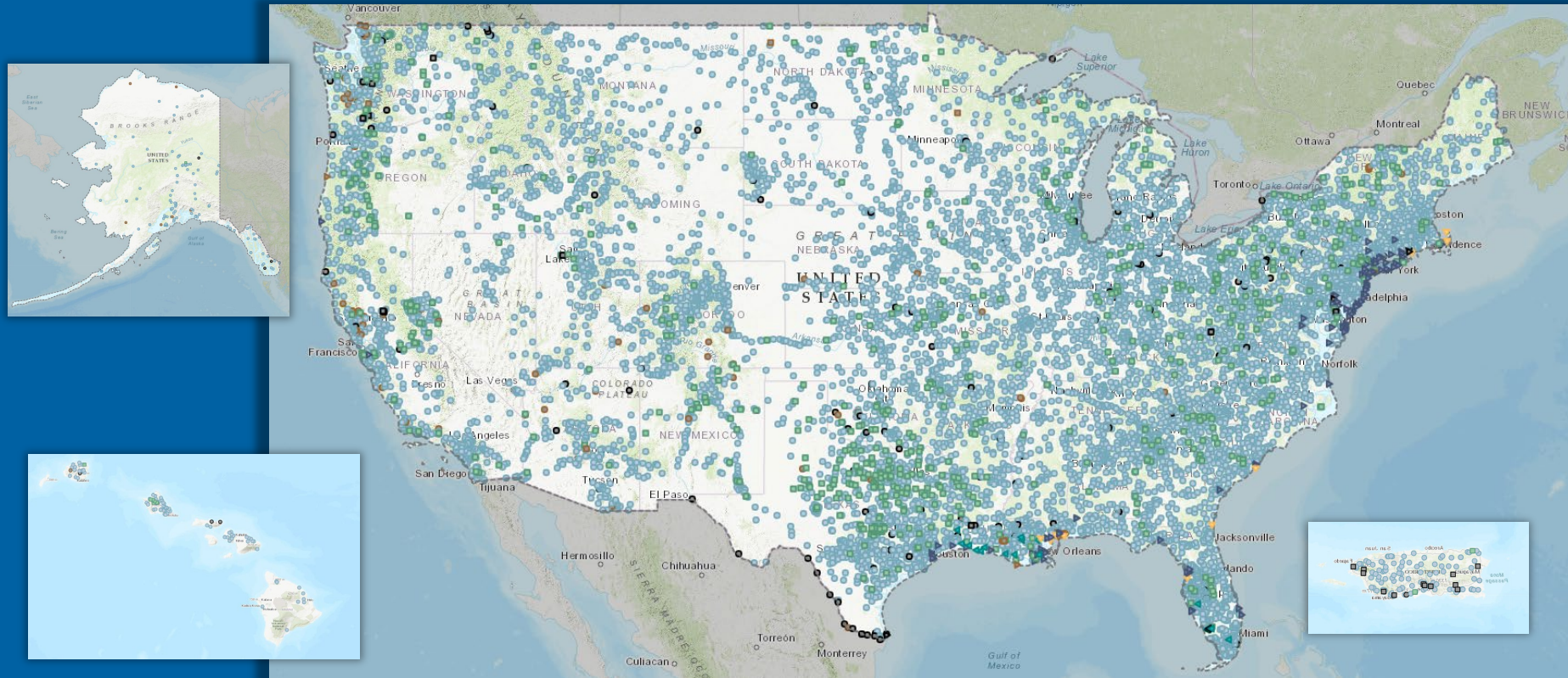
# USGS Indiana Hydrologic Monitoring Network Overview

**Jeff Woods**

Ohio-Kentucky-Indiana  
Water Science Center



# USGS National Monitoring Network

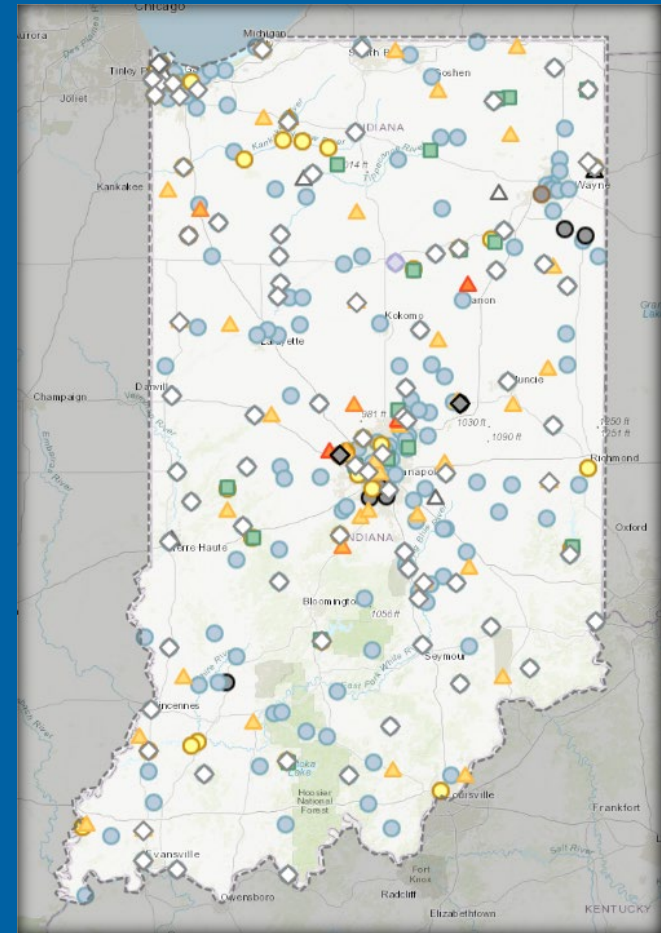


Approximately 11,500 USGS streamgaging stations transmitting in real-time across the nation and territories.



# IN Monitoring Network

- 255 Surface Water Gages
- 49 Continuous Water Quality Locations
- 52 Continuous GW Wells
- 85 Precipitation Gages



# IN Monitoring Network

- Flood forecasting
- Water Use
- Ecological monitoring
  - Industry effluence temperatures at low flows
  - Endangered species
  - Nutrient loads related to Gulf hypoxia
- Operation of dams, locks, and reservoirs
- Navigation
- Emergency management
- Infrastructure design and monitoring



# IN Monitoring Network

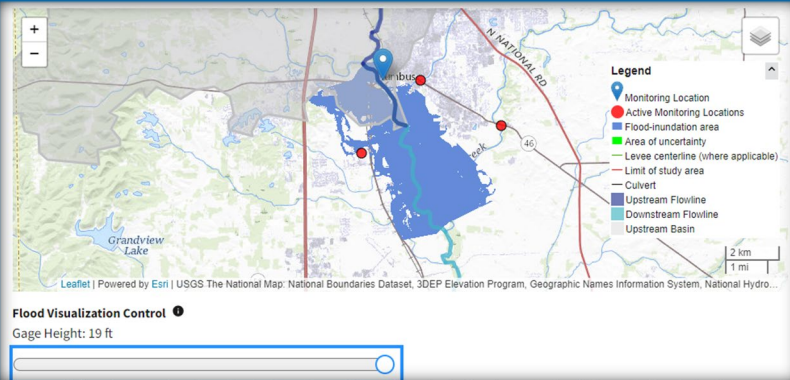
- 48 current cooperators
- Federal, State, Local, Universities, Private



# IN Monitoring Network

- All data publicly available in near real-time

## ■ WaterAlerts



8:16

### Create Alerts for This Location

**Gage height, feet**  
Latest Value: -0.88 ft  
on Mon, 31 Jul 2023 12:00:00 GMT UTC

**What values have been seen in the past?**

**Your alert's trigger range -- units: ft**

-3 ————— 28.6

What does this graphic tell me?

**Send alert when current condition value is**  
greater than \_\_\_\_\_ ft  
less than \_\_\_\_\_ ft

I'd like to use a value range

**Quick click to set options**

Flood levels - ft

4.5 9 14 16

What do these colors mean?

Questions or Comments

AA accounts.waterdata.usgs.gov

USGS National Water Research Institute

## East Fork White River at Columbus, IN - 03364000

July 24, 2023 July 31, 2023  
Gage height, ft

**-0.08 ft - Jul 29, 2023 01:45:00 PM EDT**

USGS  
National Water Research Institute

Value	Status	Time
-0.08 ft	Provisional	Jul 29, 2023 01:45:00 AM EDT
-0.08 ft	Provisional	Jul 26, 2023 05:55:00 PM EDT
		Add last year's data to graph
		No real-time data for this data type

Statistics are not available at this monitoring location for the data type: Gage height, ft

**IMPORTANT!** Data may be provisional

Change time span | Subscribe to WaterAlert | View related graphs | Download data | View data records

**Select data to graph**

- Gage height, feet (2023-09-04 to 2023-07-31)
- Discharge, cubic feet per second (2023-09-04 to 2023-07-31)
- Precipitation, total, inches (2023-09-04 to 2023-07-31)

**Monitoring camera**

There are no cameras currently available at this monitoring location.

**Flood Visualization Control**  
Gage Height: 2 ft

Interested in learning more about how a flood affects this area? [View this monitoring location on the Flood Information to Action Mapper](#)  
Interested in understanding how to access the app's raw data? [Learn About the Network's Raw Data Index \(RD\)](#)

Summary of available field and laboratory sample data +

Summary of all available data +

Location metadata +

Operated in cooperation with:

DNR Indiana Department of Natural Resources | USGS National Water Research Institute | USGS - Cooperative Water Data | USGS - Federal Priority Streamgauge

# New Groundwater Portal

- Recent conditions relative to monthly statistics
- Period of Record plots and Monthly Statistics

