

Source Water Protection in Indiana

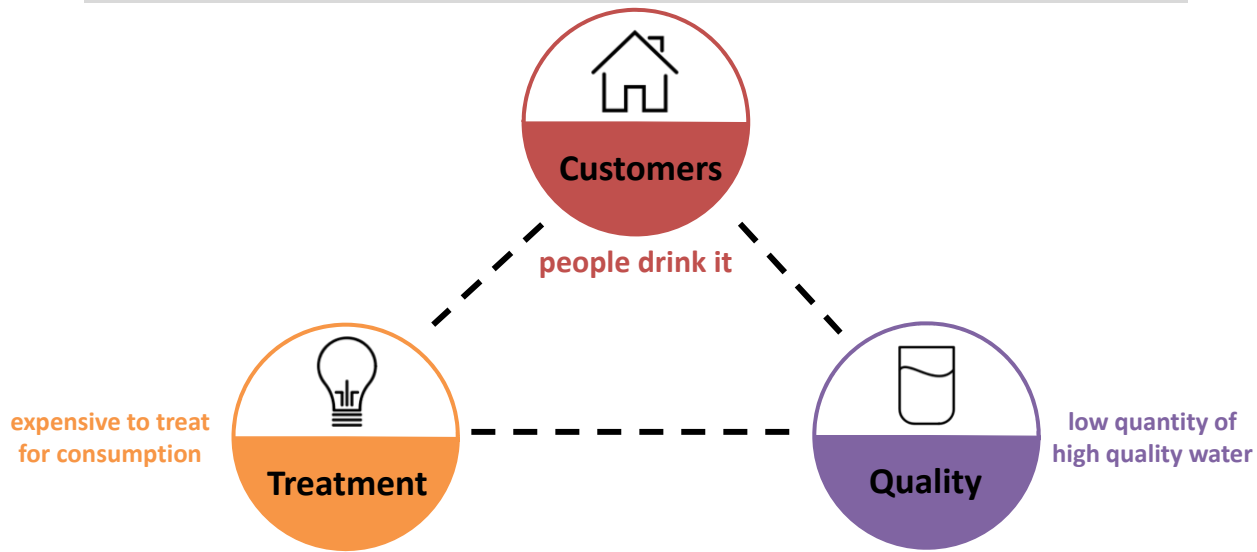
Katie Jamriska

Water Quality and Environmental Compliance Lead
Indiana American Water

What is Source Water and SWP?

- **Source Water**- a raw, untreated supply of water- typically surface water or groundwater- used for current or potential future drinking water.
- **Source Water Protection**- a proactive approach to safeguarding, maintaining, or improving the quality and/or quantity of drinking water sources and their contributing areas.

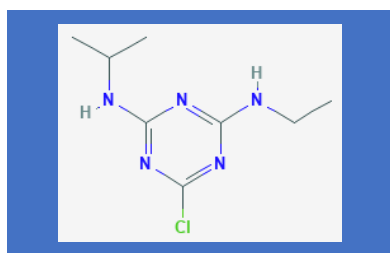
Why utilities are concerned



Drinking Water Regulations



Quality vs. Quantity



Treatment



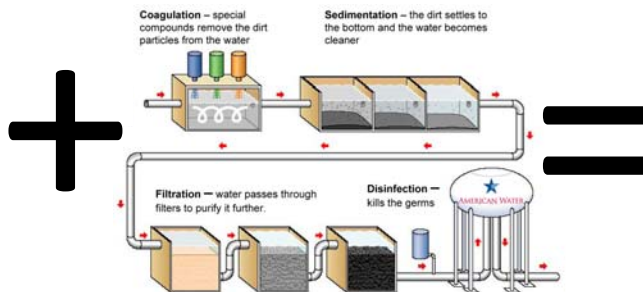
≠



Treatment



Treatment





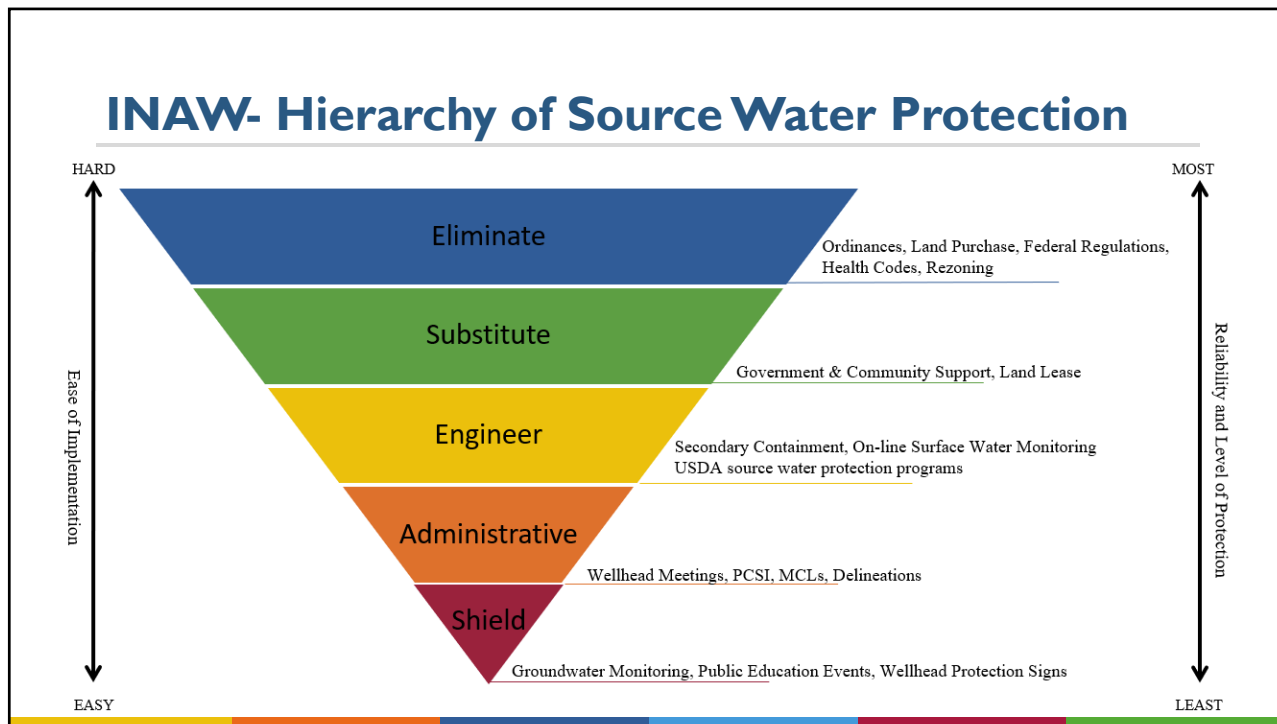
Indiana American Water

U.S. FISH & WILDLIFE SERVICE

QUAIL forever The Habitat Organization

PHEASANTS forever The Habitat Organization

The Nature Conservancy



INAW- what we are doing What can we all do?



Support federal, state, and local policy protecting sources of supply



Communicate successes and challenges to wide network



Maintain a leadership role in industry organizations



Share the story of source water protection and its importance



Participate in local water events and meetings

COLLABORATION

Partners in SWP Efforts

Natural Resource Conservation Service state and Federal field offices (NRCS)

Drinking water systems and utilities

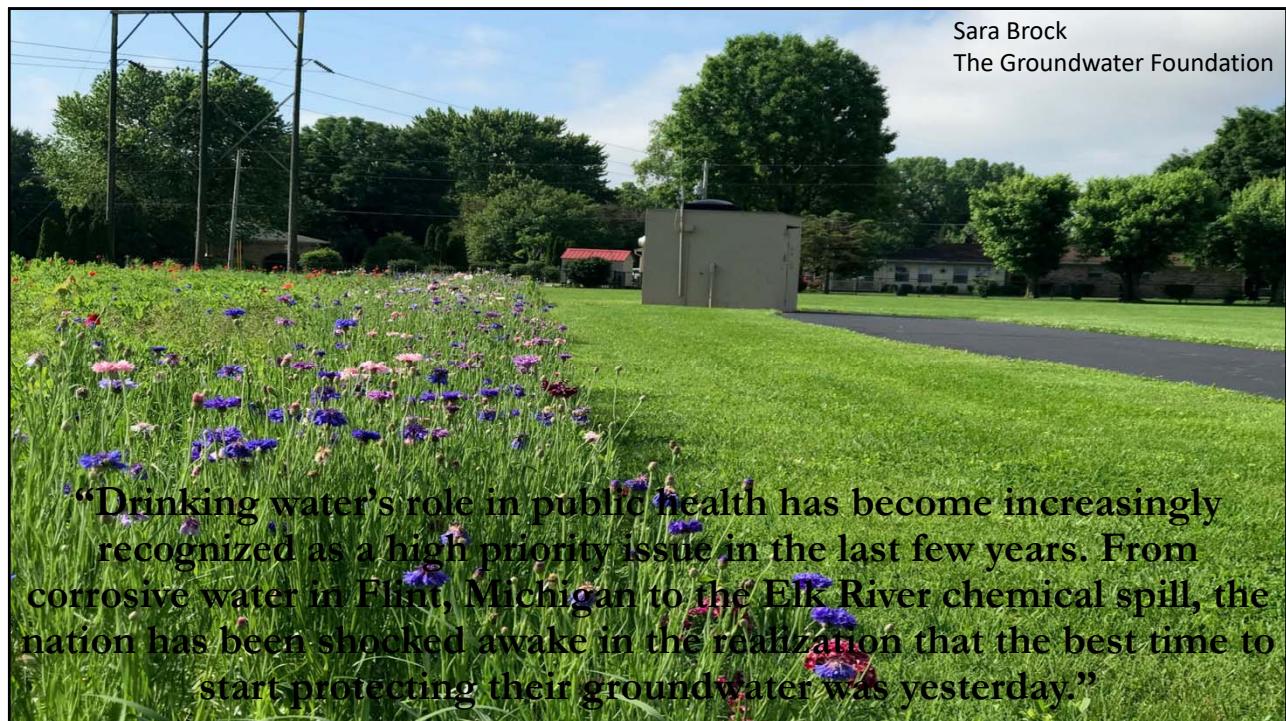
State drinking water primacy agencies

State environmental agencies

Watershed organizations

Soil and water conservation districts

National Source Water Collaborative and its member agencies



Thank you!

Katie Jamriska
katherine.jamriska@amwater.com
317.893.3559