

TOPIC: LAND PRESERVATION

Overview

Indiana ranks 38th in the U.S. in protected land but among the highest in diversity of plants and animals. Natural areas in Central Indiana are packed with a wide variety of plants, butterflies, birds and other wildlife. For example, an unprotected 13 acre wetland in Central Indiana has had more plants documented from it than the 244,000 acre Badlands National Park. Sites like this are special and deserve protection. High quality natural areas can be protected and in most cases open to the public for enjoyment and appreciation. Private lands can also be protected and used for selective timber harvesting following approved plans ensuring that water quality is not negatively impacted by land management activities.

Impacts on Our Water

Protected natural areas help improve water quality and store water during flood events, even when not near a stream. Land and water are inextricably connected and affect one another.

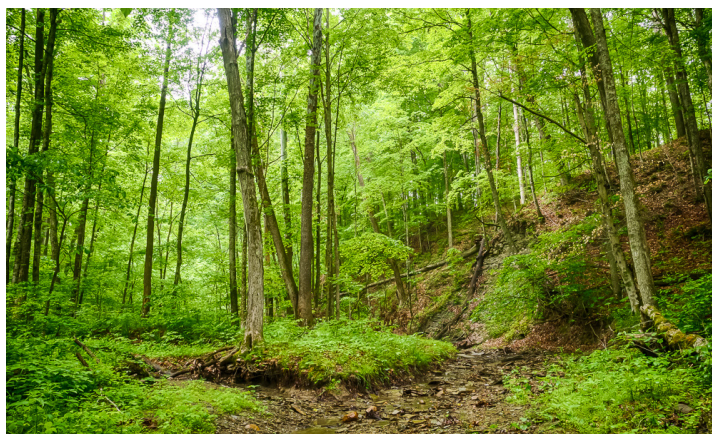
More Information

www.conservingindiana.org

Cliff Chapman
cchapman@conservingindiana.org



August 2018 addition to Mossy Point Nature Preserve



Glacier's End Nature Preserve, Johnson County